

**Congratulations on your purchase of Zenolite®. Here are a few handy hints to help with the install—for the full installation guide, please visit [zenolite.com](http://zenolite.com)**

## CAUTION

ZENOLITE IS SUITABLE FOR INTERIOR VERTICAL APPLICATIONS ONLY AND WILL NOT BE COVERED UNDER WARRANTY IF INSTALLED OUTSIDE THESE GUIDELINES.

### ⚠ Area Preparation

Ensure the walls are smooth, clean and dry. For wet areas (Zenolite HC) wall linings must be sealed with silicone or waterproofing compound at all joints.

**Tip:** *Painting the substrate underneath where the Zenolite panels will join (in a colour similar to the Zenolite being installed) minimises the appearance of the joins.*

Due to the semi-translucent nature of Zenolite LE, the substrate wall lining may require a consistent layer of paint to attain an optimum finish. White and light coloured paint will provide the brightest end result.

**Note:** *Use acrylic water-based matt paint without easy-clean additives.*

### ⚠ Marking Out

Mark all holes and cut lines on the Zenolite protective film using a soft pencil or felt tip pen. Do not use metal scribes. Do not mark out in direct sunlight, or in very hot or cold conditions, as thermal expansion and contraction can affect panel size.

### ⚠ Cutting

Circular saws will deliver a straight and accurate cut; bandsaws or router cutters are suitable for other shapes. Jigsaws can be used for cutting short distances, such as power point openings. All openings and cut outs should use rounded corners. During machining, best results are

achieved when the Zenolite is clamped to a supportive, sacrificial timber board.

### ⚠ Drilling

Prepare your drill bit by lightly sanding with 80-grit sandpaper on both cutting edges of the tip of the bit. Step drills are ideal for mid-size holes. Drill from the front-facing side of the Zenolite at a slow to medium drill speed.

### ⚠ Edge Finishing

All sawn edges must be sanded or planed prior to installation of Zenolite. Edges can be sanded using a sanding block or electric planer.

### ⚠ Panel Installation

**Please see the reverse for instructions when installing behind a cooktop.**

*For Zenolite and Zenolite HC only:*

- Identify the rear of the panel by observing the solid colour layer. Remove the film from this surface, and scuff with coarse ScotchBrite® pad or 240-grit sandpaper. Once done, use a clean cloth or tack cloth to ensure rear surface is free of dust. Do not scuff Zenolite LE.

- Apply 12mm x 1.6mm thick double-sided tape (with synthetic rubber adhesive) parallel to the panel's longest edges, at approximately 300mm spacings. Tape along edges should be inset 10mm.

- Apply a 6mm bead of adhesive (neutral

cure silicone) in a wavy pattern between each tape strip.

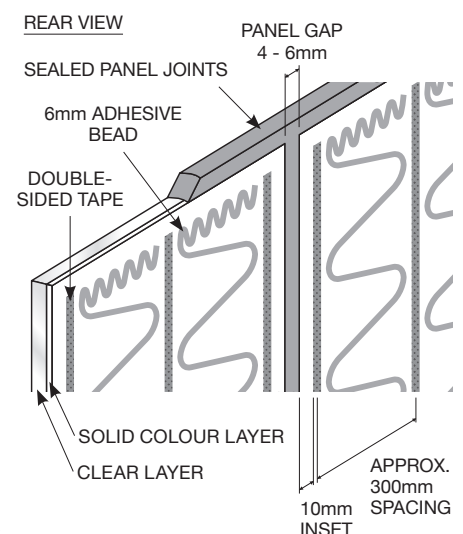
- Allow the following clearances to accommodate thermal expansion:

- **For 2440 x 1220mm panels:**  
4mm gaps around all edges, and between panels
- **For 3620 x 1220mm panels:**  
6mm gaps around all edges, and between panels

- Remove tape liner and install panels, resting on suitable spacers to ensure bottom clearance. Firmly rub down panels to ensure tape and adhesive contacts the wall.

- Allow adhesive to dry before sealing all joints with neutral cure silicone. Do not use acetic cure silicone.

- Immediately after joint sealing silicone is applied, carefully remove the protective film from the front face.



Download the full installation guide from [zenolite.com](http://zenolite.com)

## Splashback installation behind a cooktop

The following guidelines must be followed when installing Zenolite® behind an electric or induction cooktop.

### CAUTION

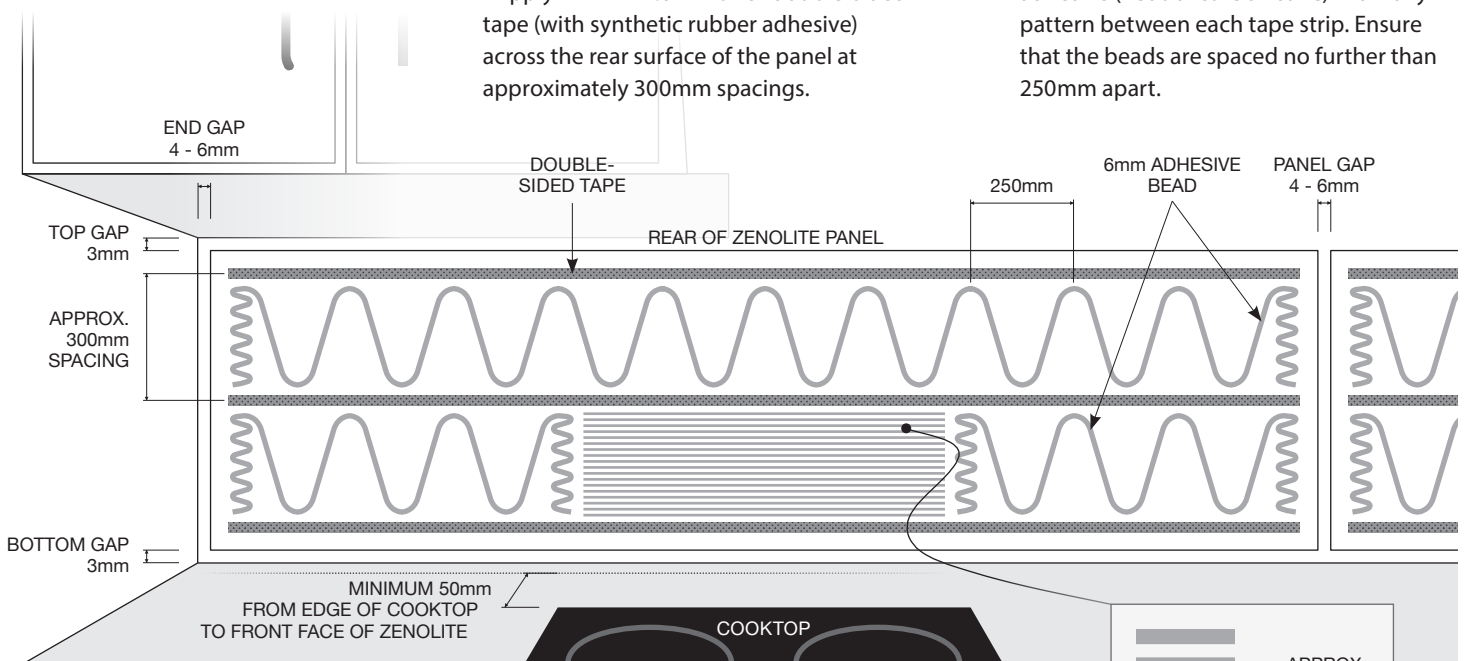
ZENOLITE SHOULD NOT BE INSTALLED DIRECTLY BEHIND A GAS COOKTOP.

- Ensure the wall is smooth, clean and dry before installation.

**All adhesives to be applied to rear of Zenolite panel – not the wall substrate**

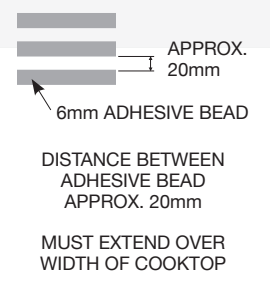
- Apply 12mm x 1.6mm thick double-sided tape (with synthetic rubber adhesive) across the rear surface of the panel at approximately 300mm spacings.

- On all areas of the Zenolite, excluding the section that will be positioned directly behind the cook top, apply a 6mm bead of adhesive (neutral cure silicone) in a wavy pattern between each tape strip. Ensure that the beads are spaced no further than 250mm apart.



- Check your splashback location – the distance between the edge of the cooktop and the front face of the Zenolite (once installed) must be at least 50mm.

- Ensure 24 hours are left for the adhesive to dry before sealing all joints with neutral cure silicone. Do not use acetic cure silicone.
- Immediately after joint sealing silicone is applied, carefully remove the protective film from the front face.



Please note that **Australian Gas Installation Standards AS/NZS 5601** precludes the installation of Zenolite (or any acrylic material) within 200mm of a gas burner.

Download the full installation guide from [zenolite.com](http://zenolite.com)