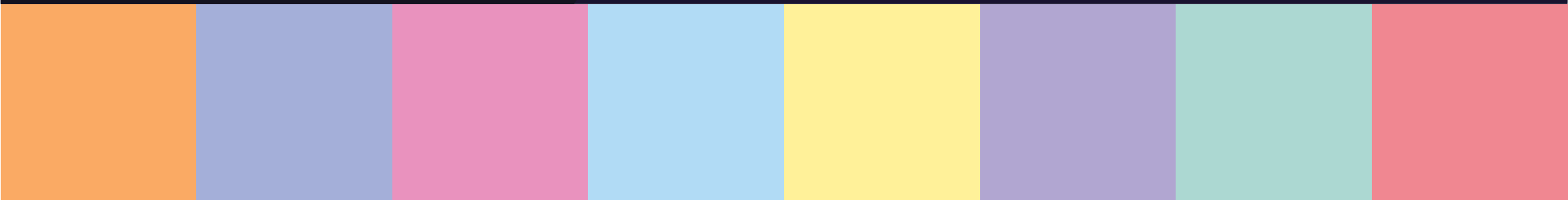




SWEET  
PASTELS

*What's your  
flavour?*

The tastiest colour palette  
from the Perspex® brand





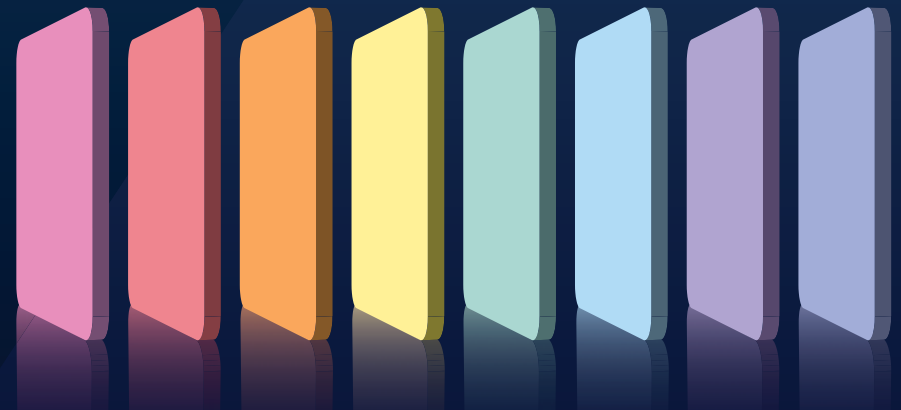
What's your  
flavour?



Presenting the cooler and softer side of the Perspex<sup>®</sup> acrylic colour spectrum.

This inspiring compilation of tones will take your imagination beyond its limits; with a Pick 'n' Mix of mouth-watering colours to choose from and two flavoursome finishes in one sheet...

**– If this doesn't tickle your taste buds, we don't know what will!**



**Perspex<sup>®</sup> Sweet Pastels are available in eight delicious colours in 3050 x 2030mm size sheets in 3mm thickness. Samples are available upon request.**

Looking for something different?  
Whatever your requirements, contact us with your bespoke brief to check availability.

The colours shown in this printed document may not exactly match Perspex<sup>®</sup> Sweet Pastels acrylic sheet. Edge colour can change slightly on thermal processing.

**Potential. Performance. Perspex<sup>®</sup>**



**Orange Fizz**

Product Code: **SA 3143**

## **Tasteful displays with character**

Bring your displays to life with these tempting colours that scream personality.

---

☑ RETAIL ☑ DISPLAY





## Bubblegum Blue

Product Code: SA 7490

### Light weight and easy to install

Developed specifically to feed any visual communication application, they are lightweight, yet durable for easy installation from indoor point of sale to external exhibitions.

---

🕒 EXHIBITION 🕒 SHOP FITTING





## Sour Grape

Product Code: SA 7563

### Strong, durable and hard wearing

They may look soft, but these Sweet Pastel shades are infused with strength for those tough interior requirements, creating products that can last for decades.

---

☑ SCHOOL ☑ OFFICE ☑ LEISURE







## Candy Floss Blue

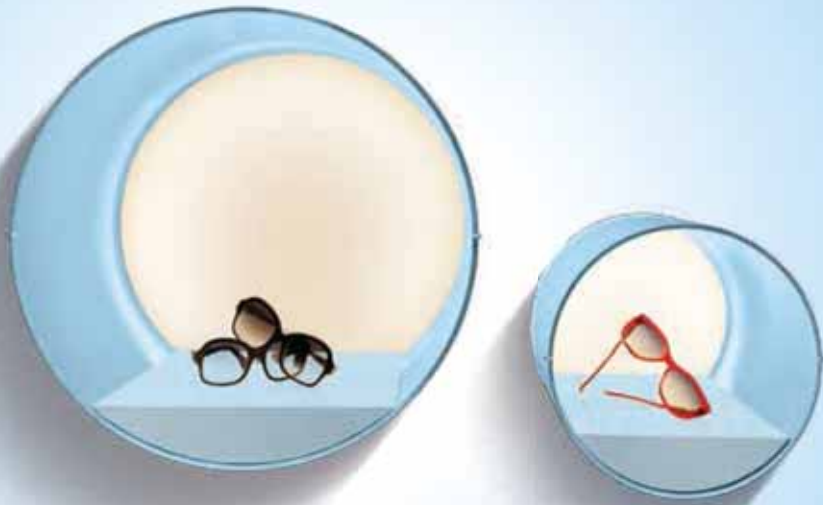
Product Code: SA 7489

### Easy to shape and style

Sweet Pastels are easy to shape and style to your taste; endless possibilities in creative design to feed the appetite of your customers!

---

☉ POS ☉ POP





**Lemon Bonbon**

Product Code: SA 2170

## Trend focused

A colour innovation that is trend focused for the tastemakers of the world and the fashionista inside all of us.

---

🕒 FASHION 🕒 PRODUCT DESIGN







**Parma Violet**

Product Code: SA 7562

## Satin and gloss surfaces all in one sheet

Sure to sweeten up your designs or sugar coat any project; even after thermoforming the satin surface texture remains in immaculate condition.

---

☉ INTERIORS ☉ FURNITURE







## Spearmint Green

Product Code: SA 6382

### Perspex® 10-year outdoor guarantee

A special recipe that warrants the Perspex® acrylic 10 year outdoor guarantee, so you can devour any weathering worries and rely on our hard wearing sheet for head turning results in signage and architectural features.

---

🕒 SIGNAGE 🕒 ARCHITECTURAL FEATURES





## Raspberry Sherbet

Product Code: SA 4274

### 100% recyclable

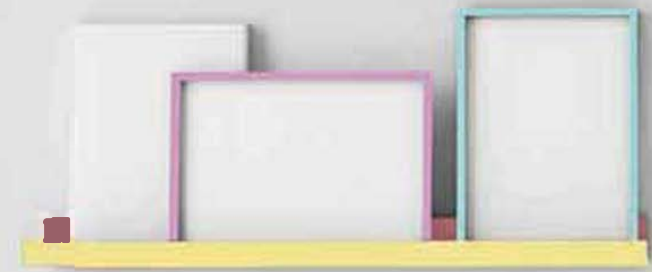
Unlike most plastics, our cast acrylic sheets are 100% recyclable, even in these 8 delicious flavours.

---

♻️ ENVIRONMENTALLY FRIENDLY







**Contact us**  
Tel. ((02) 8038 2000 Fax. (02) 9417 6169  
Web. [www.allplastics.com.au](http://www.allplastics.com.au)  
Address. Unit 20/ 380 Eastern Valley Way,  
Chatswood, NSW 2067 AUSTRALIA.