

DONCHAMP[®] Splash

Integrated Solutions – Aquarium, Architectural & Pool Viewing Panel

DONCHAMP[®] Splash cast acrylic block panel is a specially developed acrylic grade, which is highly weather resistant (30-year Clear limited manufacturer's warranty), excellent clarity & optical properties, exceptional mechanical properties & rigidity, simple to fabricate (cut, bend & polish) whilst enhancing the cosmetic appearance of your aquarium or pool surround.

DONCHAMP[®] Splash is the perfect solution for aquarium/swimming pool & architectural applications:

Advantages:

- Excellent strength / high mechanical properties & surface hardness.
- Easy to clean & maintain.
- Superior optical properties (meeting ISO standards)
- Engineered to 30-year design criteria.
- High rigidity.
- Dimensionally stability.
- Exceptional UV stability (30-year manufacturer's warranty).
- Light weight.

Finished products available:

- **DONCHAMP[®] Splash tanks** (Fabricated acrylic tanks)
- **DONCHAMP[®] Splash Cylinders** (Fabricated & rotational molded acrylic cylinders)

Specialty Properties & Capabilities - DONCHAMP[®] Splash

- *Flat panels (available with saw cut & or polished edges).*
- *Thermoforming & bending of curved panels.*
- *Bonding (in house or on-site bonding).*
- *Annealing.*
- *Painted edge trim.*
- *International installation.*
- Very high mechanical bonds / lamination process, excellent cosmetic appearance.
- 30 Year manufacturer's limited UV warranty against yellowing & discoloration.
- Larger length capabilities: up to 93000mm length finished size, no joins.
- Capabilities of up to 750.0mm & beyond.
- Excellent light transmission & optical clarity.
- Less than 1% content residual monomer, resulting from our raw material (MMA) curing process . High levels of residual monomer enables discoloration in the ultra-violets.
- Strict permissible level of inclusions/defects, DONCHAMP has KPI's of supplying the highest optical level.
- Approx. 11 times the break resistance as opposed to glass.
- Easy to shape/thermoform into cosmetically pleasing curves.

- Concept, technical design are all within our inhouse engineering capabilities.
- Engineering services designed to enable the best long term performance & appearance.
- DONCHAMP's deflection criteria is designed to exhibit no visible deflection, design life of 25-30 years.
- Both In-house & on-site bonding capabilities (30 installers working globally).
- Light weight (approx. half the weight of glass) & 100% recyclable product.
- Light surface marks can be easily polished out.

The combination of functional and visual attraction makes DONCHAMP® Splash panels an excellent choice for aquatic viewing window applications. The transparency of the panels opens the landscape of the aquarium, whilst offering a view into the underwater environment and enabling protection to the public. DONCHAMP® Splash also can be easily transported, having approx. 11 times the break resistance of glass & considerably lower weight. Light surface marks on DONCHAMP® Splash can be polished & marks removed.



DONCHAMP® Splash through its unique manufacturing process has one of the highest transparent substrate surface hardness, enabling ease of use in numerous commercial high traffic applications.

Std. Dimensions/panel sizes:

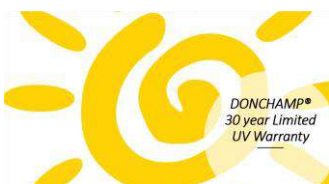
- 9300mm x 3000mm 5300mm x 2800mm
- 7800mm x 3000mm 5020mm x 2200mm
- 7300mm x 3000mm 4900mm x 2500mm
- 6800mm x 3000mm 4900mm x 2500mm
- 6300mm x 2800mm 4800mm x 2900mm
- 6100mm x 2900mm 3970mm x 1970mm
- 3000mm x 2000mm & 2440mm x 1220mm in lower thickness range.

Standard thicknesses:

30mm – 750mm (thinner gauges also available).

Masking: Pressure Sensitive PE film

All the information provided within this document and any further related technical DONCHAMP® advice, is based on testing conducted & well-established industry knowledge. This information is supplied as a suggested reference only & it does not alter the obligation of the customer/end user to conduct their own inspection and testing of any products supplied by DONCHAMP®. It is suggested that the performance of the product/products referenced are further verified by the customers/end users individual testing, where DONCHAMP® suggests this to be conducted by an accredited testing authority, where this is the sole responsibility of the customer/end user. No warranty/guarantee is relating to the properties within this document, whether noted or otherwise implied. DONCHAMP® advises that we reserve the right to make any changes in accordance to new developments in technology. Any reference to trade names/trademarks is not endorsed by DONCHAMP® & any deemed suggested similar products, are not thereby approved by DONCHAMP® to be used. Please note the DONCHAMP® accepts no liability or any other legal responsibility, relating to any current third-party intellectual property & or patent rights.



Contact us

Tel. (02) 8038 2000 Fax. (02) 9417 6169

Web. www.allplastics.com.au

Address. Unit 20/ 380 Eastern Valley Way,
Chatswood, NSW 2067 AUSTRALIA.



6th March 2019

DONCHAMP® Splash Acrylic Block

Suggested Viewing Window/panel - Installation Method

PLEASE NOTE:

All installation methods supplied within this document, by the DONCHAMP® Acrylic Group are provided only as a *suggestion*, based on previous industry experience. No liability shall be accepted by the DONCHAMP® Acrylic Group, for resulting installation issues, where we further suggest that your own individual trials are completed, in order to verify the results of this suggested method.

Installation

- A. The concrete rebate within the swimming pool/aquarium tank shell is to be at a maximum 4% moisture content level, prior to commencing the water proofing of the rebate. This is to ensure that the water proofing membrane shall sufficiently adhere.
- B. We suggest that the bottom supporting rebate is installed as a U shape wherever possible. This will assist with the reduction of the thickness of the DONCHAMP® Splash viewing panel & resulting in an end cost saving.
- C. All concrete rebate channels to exhibit a perfectly smooth finish, which assists with the adherence of the waterproofing membrane.
- D. The waterproofing membrane should be applied to a minimum of 300.0mm beyond the rebate channel area, wherever possible.
- E. Once the waterproofing membrane is applied & cured, the waterproofing should then be tested for leakage or any other resulting issues.
- F. The DONCHAMP® Splash window/viewing panel is to be carefully manoeuvred into position, with the panel being levelled into position, using plastic window spacers (10mm to 30mm) fixed with an applicable (non acidic / neutral cure) silicone.
- G. The spacers are designed for the cementitious grout to flow under & around the DONCHAMP® Splash viewing panel.
- H. Prior to applying the grout, please ensure to pack the vertical channel ends, with a compatible foam, to prevent the grout from pooling up around the edges.

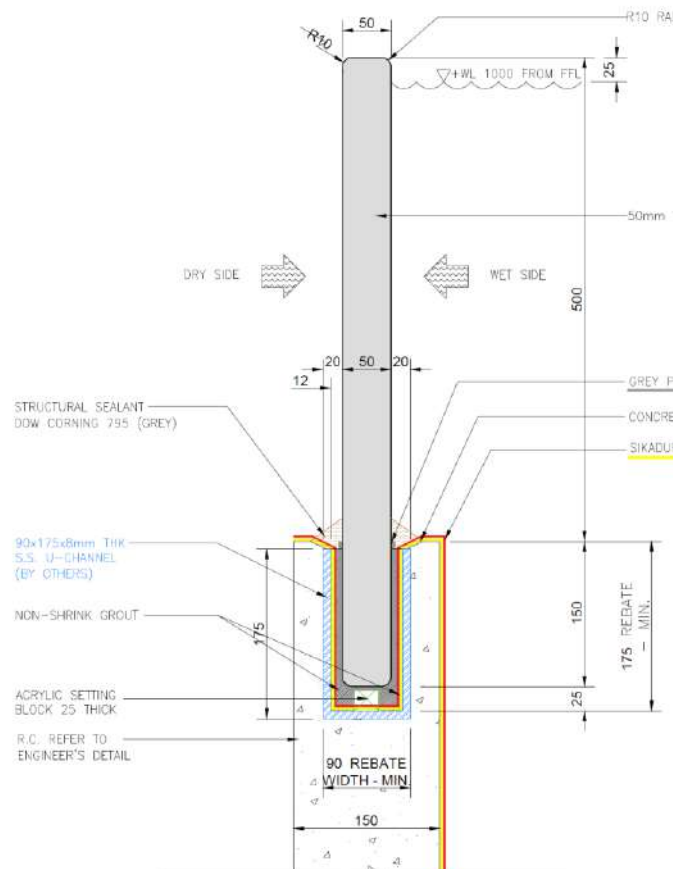
Contact us

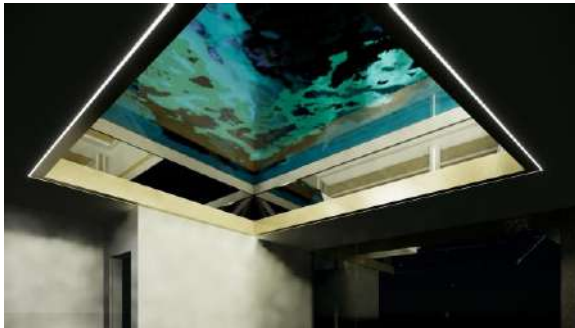
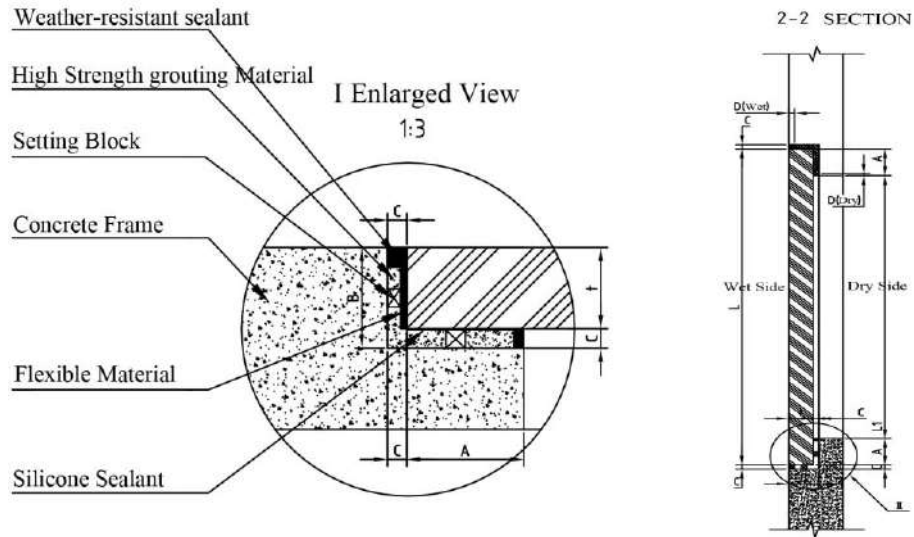
Tel. (02) 8038 2000 Fax. (02) 9417 6169
 Web. www.allplastics.com.au
 Address. Unit 20/ 380 Eastern Valley Way,
 Chatswood, NSW 2067 AUSTRALIA.

- I. Please follow the same process for the bottom rebate, also allowing a 30.0mm distance for the silicone seal.
- J. Pour the non shrinking cementitious grout, to fill any resulting gaps.
- K. The cementitious grout should finish at an approximate distance of 30-40mm from the top of the rebate channel, or any finishing ceramic tiles, to allow for any resulting movement.
- L. DONCHAMP® Splash panels will absorb moisture over time & will expand at a higher rate along the length.
- M. All DONCHAMP® Splash panels should have no grout around the ends of the panel to allow for sufficient movement, thus the reason for installing a compatible foam in these end areas.
- N. If this is not installed it may create a pressure point within the bottom corners.
- O. Once the grout has completely cured an applicable silicone, is to be applied into the final resulting gap, to allow for the DONCHAMP® Splash acrylic panel movement.

PLEASE NOTE:

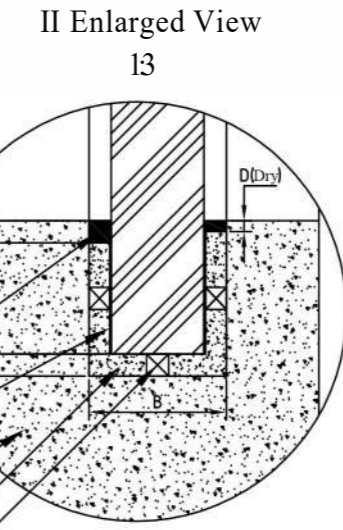
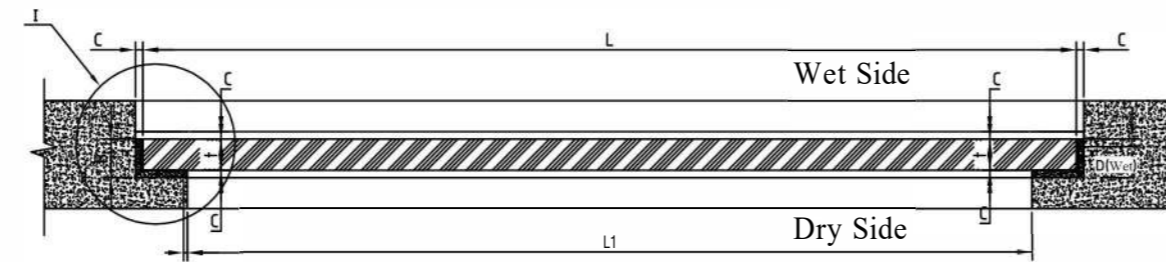
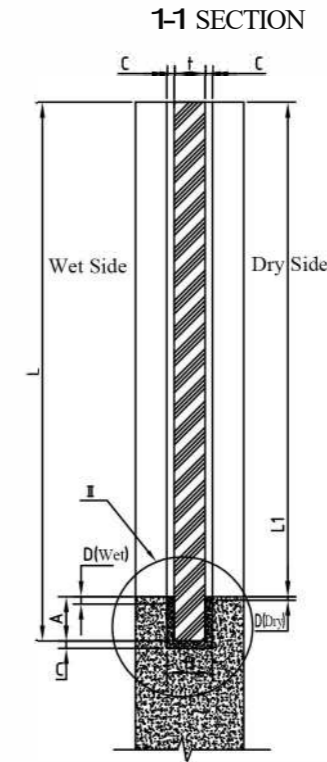
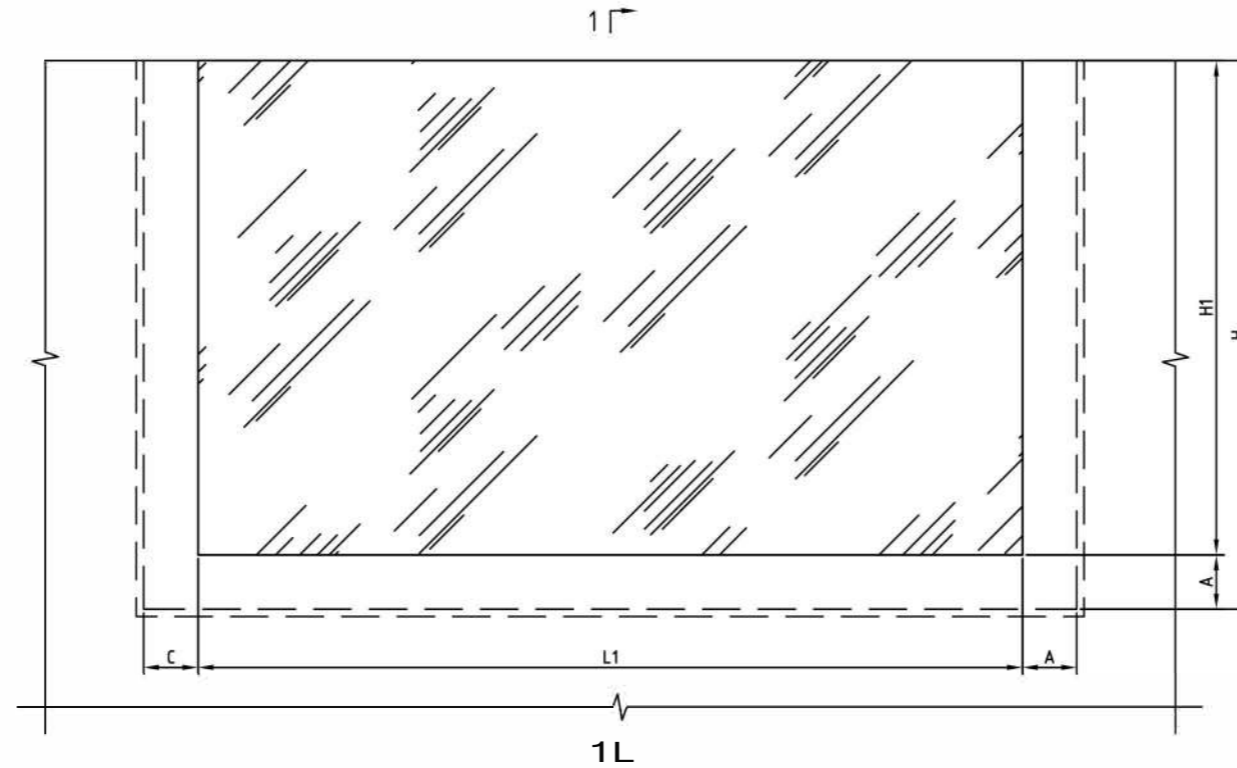
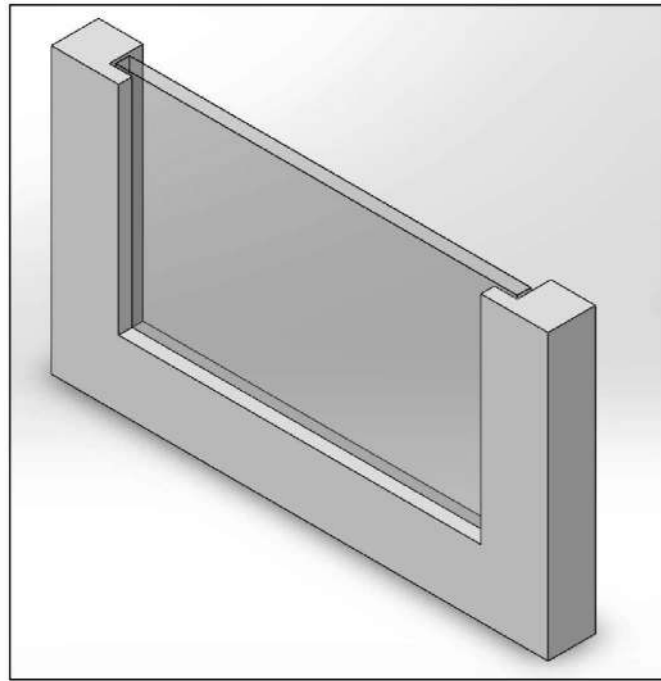
For any resulting questions/issues regarding our installation suggestion, please consult your DONCHAMP® representative for further information.



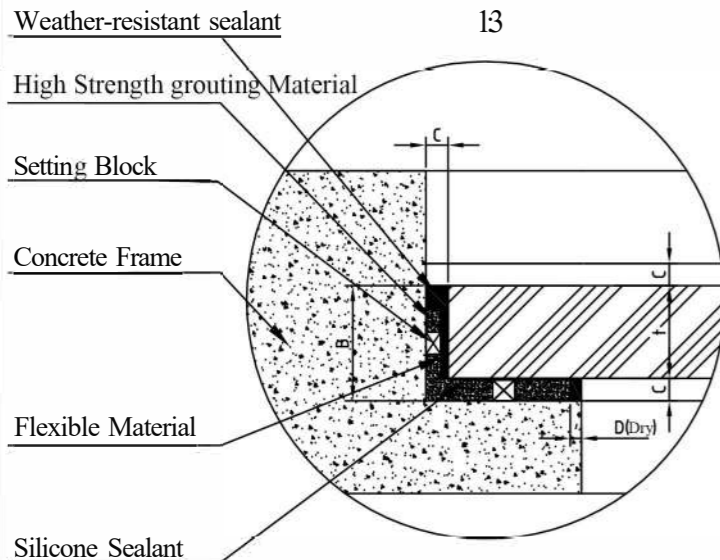


3 SIDED

TYPICAL SUPPORT SYSTEM



I Enlarged View 13



$$L=L_1+2A/H=H_1+A$$

t	40 t 130	140 t 160	170 t 300	310 t
A	150	170	t+80	t+90
B	t+2C	t+2C	t+2C	t+2C
C	30	30	40	50
D	0=30			

- Weather-resistant sealant
- Silicone Sealant
- Concrete Frame
- High Strength grouting Material
- Setting Block

DESIGN FIRM
Jiangsu Donchamp new material science technology co.,Ltd

No. 186, Tongjiang Road,
Economic Development Zone,
Taixing City, Jiangsu Province, China
225400

DESIGNER
CHECKED
ASSESSOR
SCALE **1: 30**
DATE

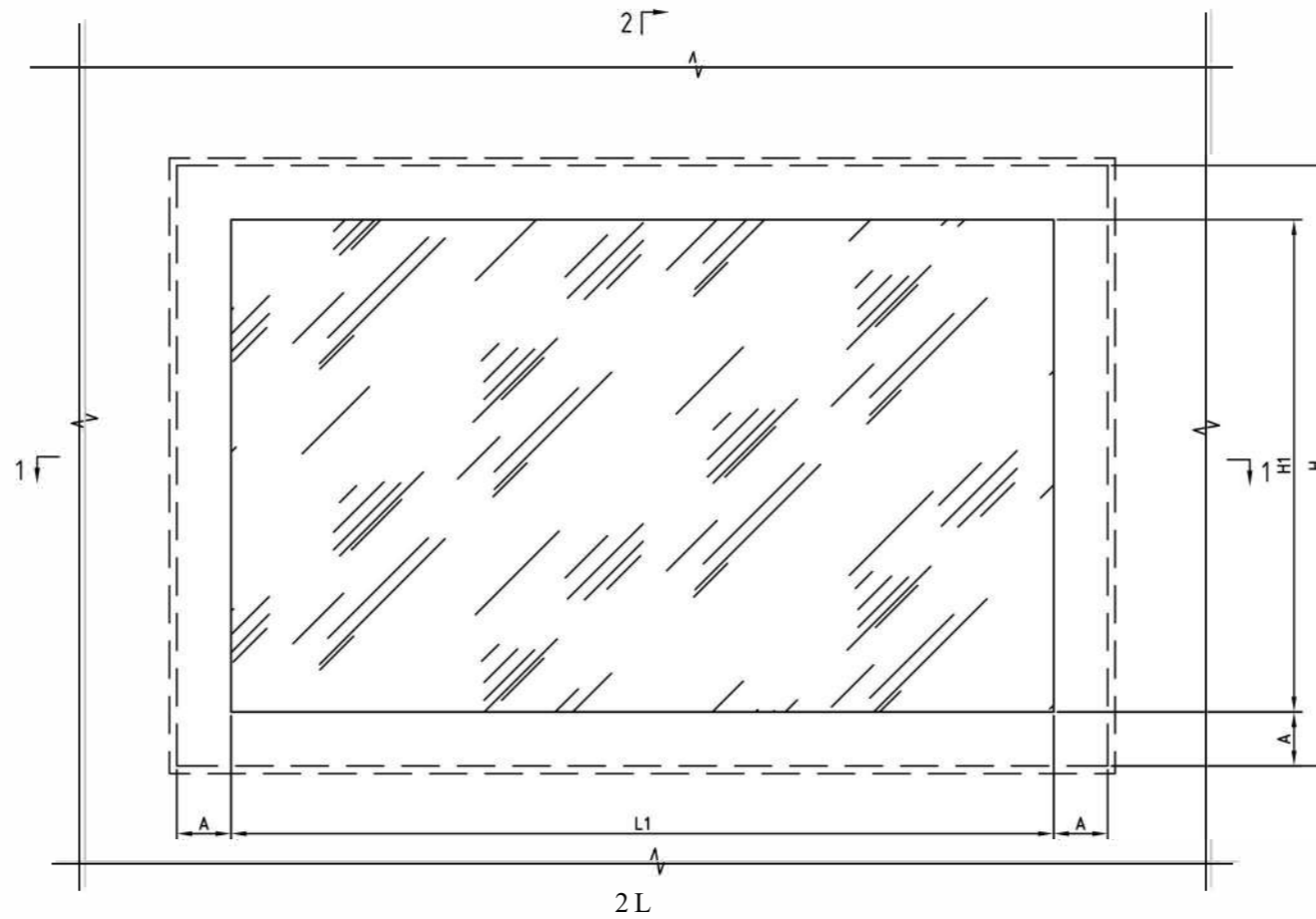
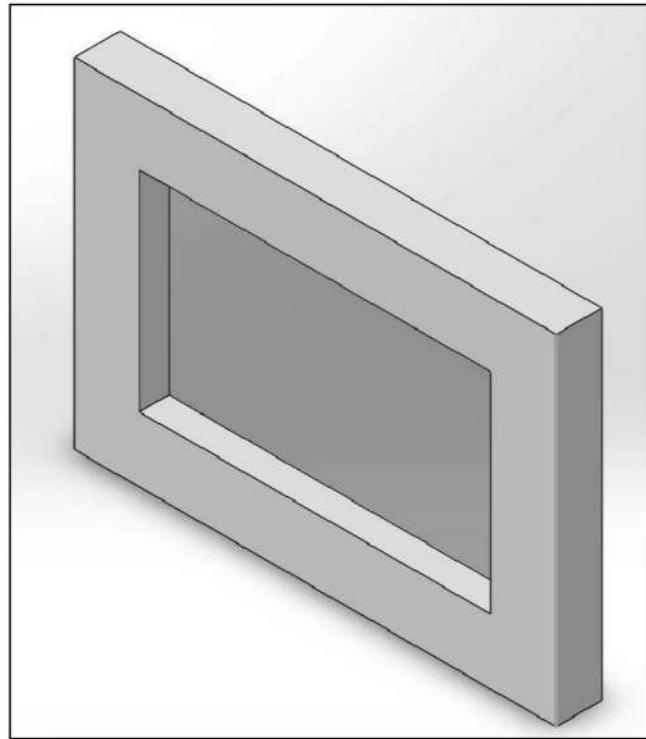
DRAWING NAME
ENTRY NAME
DRAWING No.

This drawing is copyright
ConQadNl s h a l l - f o n n f t g i . n d - o n l y
Conradora must check all dimenllona on l l l e
ConQadNl must be reported immediately I D -

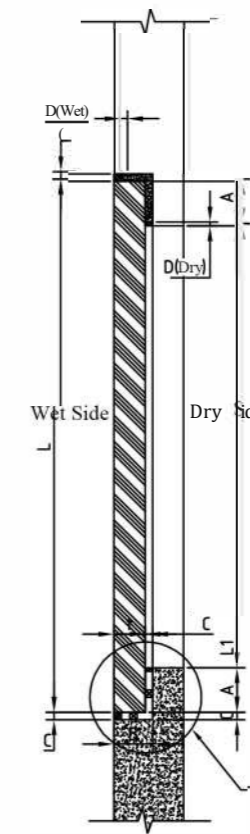


4 SIDED

TYPICAL SUPPORT SYSTEM

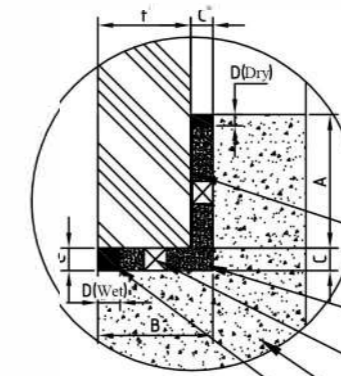


2-2 SECTION



II Enlarged View

13



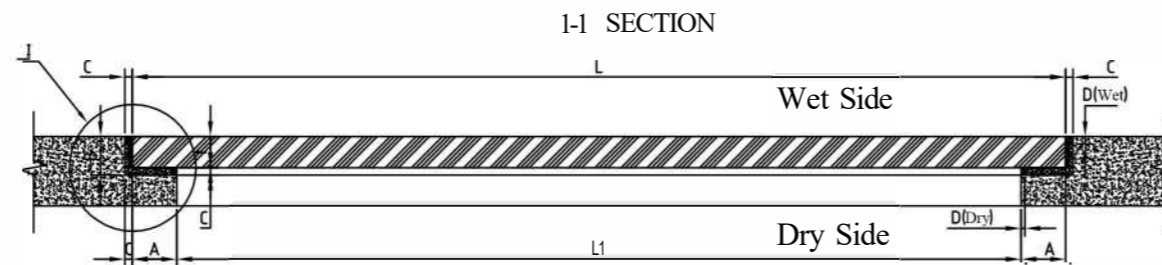
Silicone Sealant

High Strength grouting Material

Setting Block

Concrete Frame

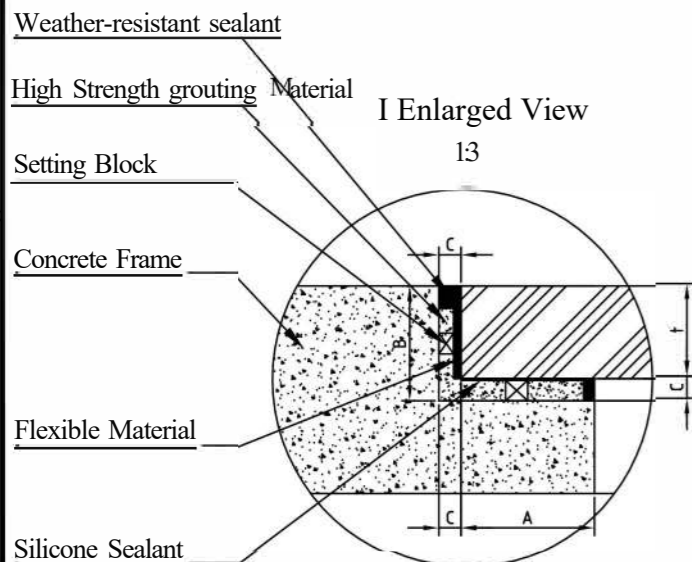
Weather-resistant sealant



I-I SECTION

I Enlarged View

13



$$L=L_1+2A/H=H_1+2A$$

t	40<t<130	140<t<160	170<t<300	310<t
A	>150	>170	>t+80	>t+90
B	>t+C	>t+C	>t+C	>t+C
C	30	30	40	50
D _{wet}	0 D _{wet} =30			
D _{dry}	0 D _{dry} =10 15			

DESIGN FIRM
Jiangsu Donchamp new material science technology co.,Ltd

No. 186, Tongjiang Road,
Economic Development Zone,
Taixing City, Jiangsu Province, China
225400

DESIGN

CHECKED

ASSESSOR

DATE

1: 30

DRAWING NAME

ENGINEER NAME

DRAWING No.

This drawing is for reference only.
Contractor must check all dimensions on site
before construction.

