

'20

**KD<sup>®</sup>**  
**COVERINGS**



Tel. 02 8038 2000 Fax. 02 9417 6169 Email. [sales@allplastics.com.au](mailto:sales@allplastics.com.au)

Address. Unit 20/380 Eastern Valley Way, Chatswood, NSW 2067 AUSTRALIA. [www.allplastics.com.au](http://www.allplastics.com.au)

M-099 Ochre Laja Stone Panel  
Panel Laja Ocre



# TOTALStone<sup>®</sup>, PANELS THAT ARE **NOT** MADE OF STONE

TOTALStone<sup>®</sup> faithfully reproduces texture and colour of usual spaces, in stone, brick slate... Thus, surfaces achieve leading role in usual architectonic structures, filtered through actual decorating style. An interpretation, where the elegance, design and quality, show all its expression.

We strongly believe in style and distinction both in open spaces and in those more difficult to cover. We cover all of them, every one, for you and your comfort. Our last generation technology offers practical and easy - to - use products, visually perfect and easy to install, to create outstanding environments in unthinkable places. We design panels, vaults, arches and angles that provide a personal and distinguished touch in traditional or innovative spaces.

# TOTALStone<sup>®</sup>, LOS PANELES QUE **NO** SON DE PIEDRA

TOTALStone<sup>®</sup> reproduce con una fidelidad milimétrica la textura y el color de entornos de siempre como la piedra, el ladrillo, la pizarra... Así, convertimos estas superficies en protagonistas de las estructuras arquitectónicas de siempre, filtradas por las tendencias decorativas de hoy. Una interpretación donde la elegancia, el diseño y la calidad se muestran en toda su expresión.

Creemos en el estilo y la distinción tanto en los espacios abiertos como en aquellos más difíciles de cubrir. Todos, absolutamente todos, los vestimos para usted y para su comodidad. Nuestra tecnología de última generación nos ofrece los productos más prácticos, manejables, fácilmente instalables y visualmente perfectos para crear ambientes sorprendentes en lugares impensables. Diseñamos paneles, bóvedas, arcos y ángulos que aportan un toque de personalidad y distinción en los ambientes de entornos tradicionales o de carácter vanguardista e innovador.

MADE IN  
BARCELONA

patented  
product

EXPORT  
FACTORY

PREMIUM  
QUALITY



by KA<sup>®</sup> Coverings



The image features three vertical panels of different stone textures. The left panel shows a light brown, rough-hewn stone surface. The middle panel displays a dark grey, layered stone texture. The right panel shows a classic red brick pattern with white mortar. An orange horizontal bar is overlaid on the middle panel, containing the brand name and tagline.

**TOTALStone**<sup>®</sup>

Natural inspiration · Inspiración natural

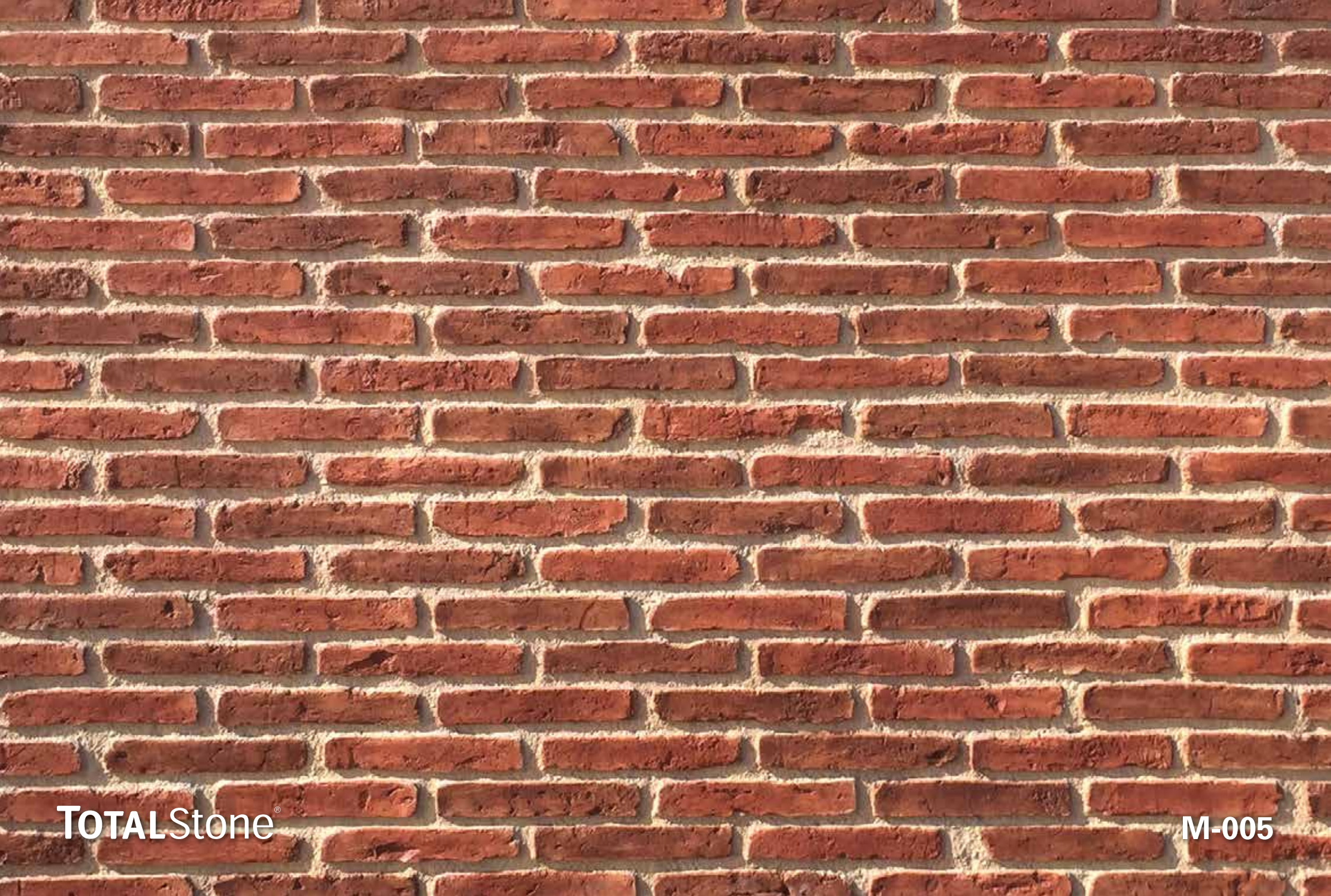




TOTALStone®

M-272





TOTALStone®

M-005

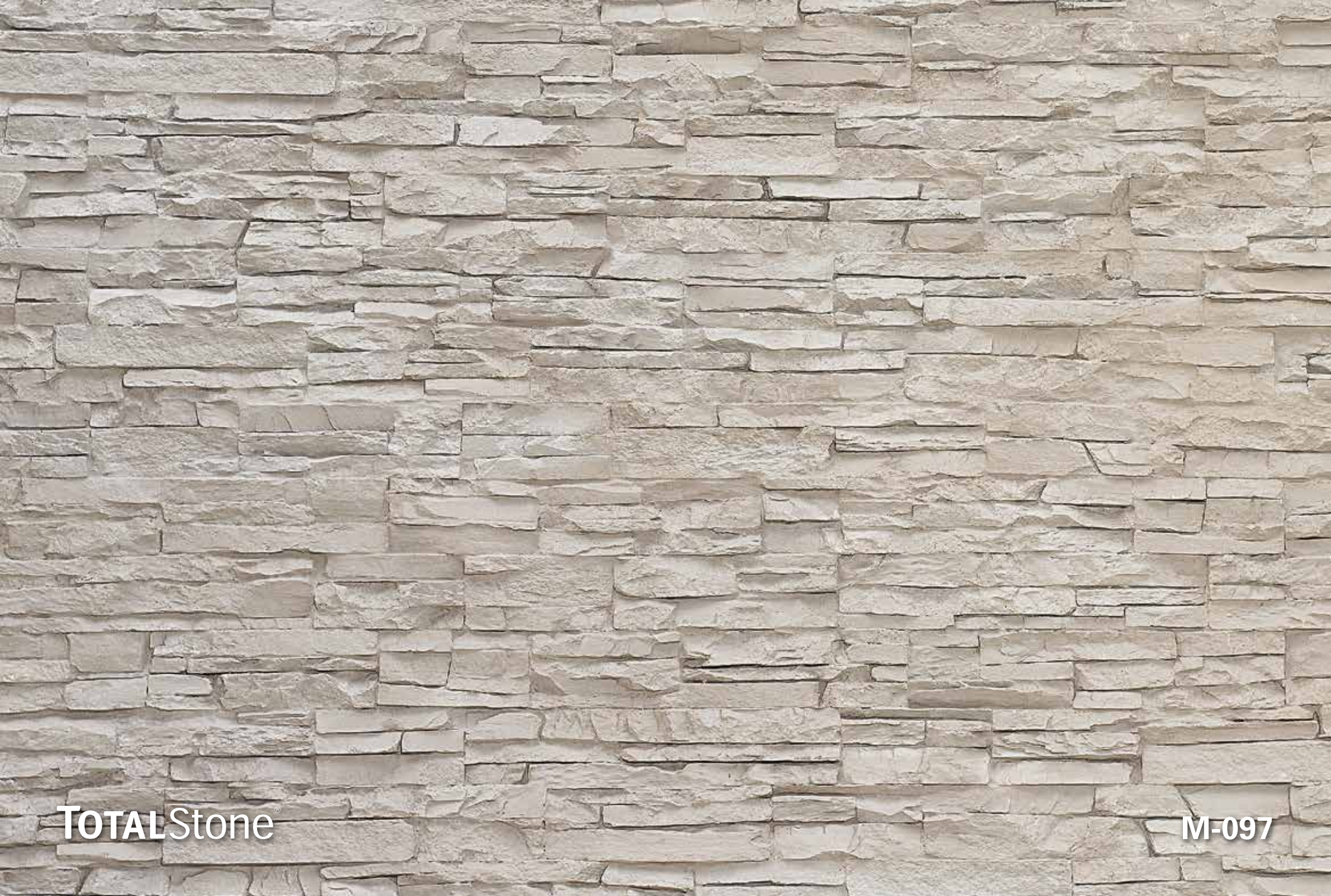




TOTALStone®

M-236





TOTALStone®

M-097





**TOTALStone**<sup>®</sup>

**M-135**

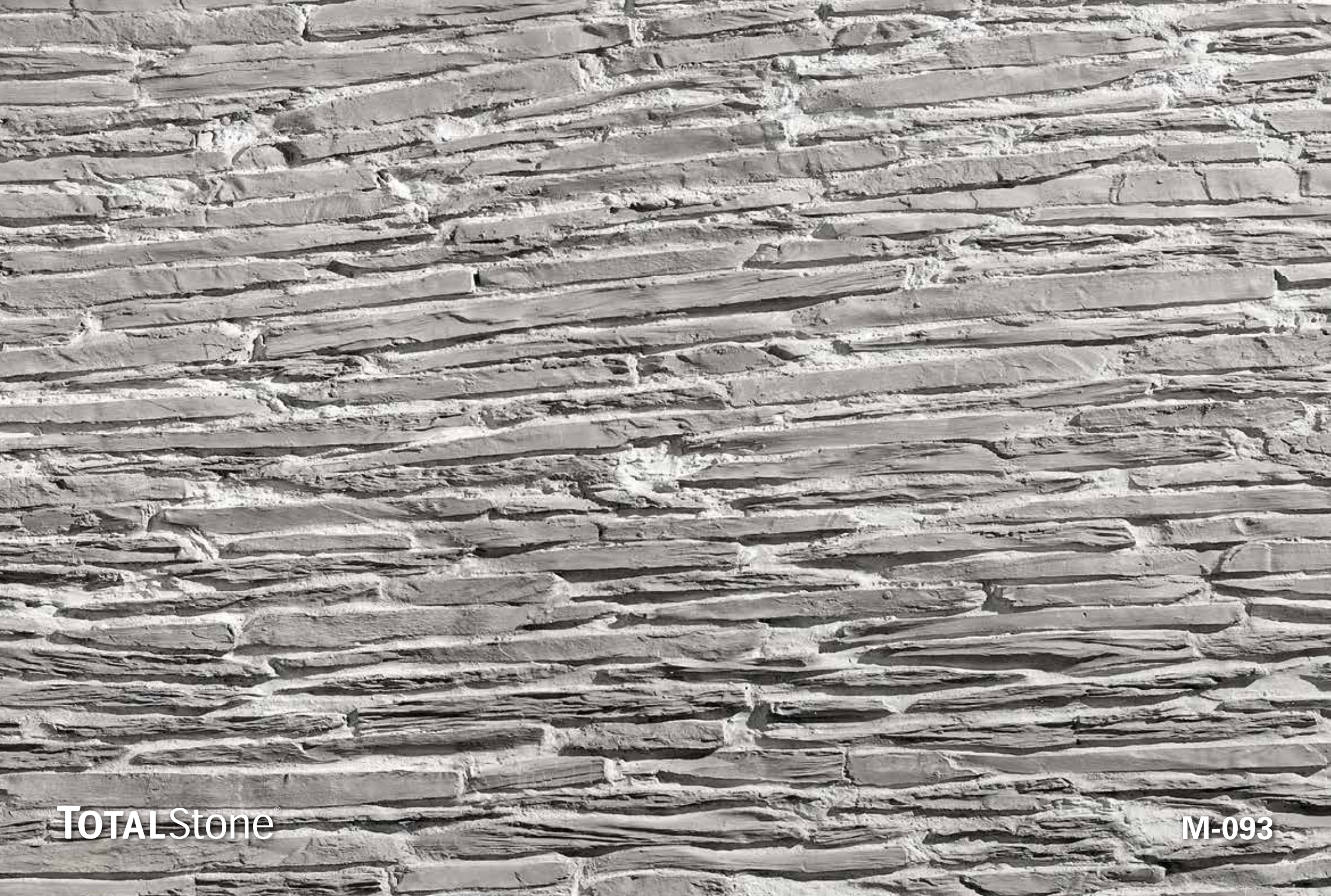




TOTAL Stone®

M-051





TOTALStone®

M-093





TOTALStone®

M-099





TOTALStone®

M-076





TOTALStone®

M-114





M-004



M-095



M-135



M-220



M-051





M-058



M-117



M-098





M-272



M-500



M-500



M-095





M-270



M-030



M-051





M-099



M-096



M-242





M-015



M-005

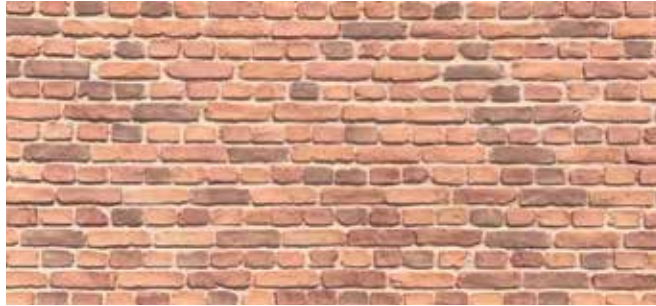


M-021

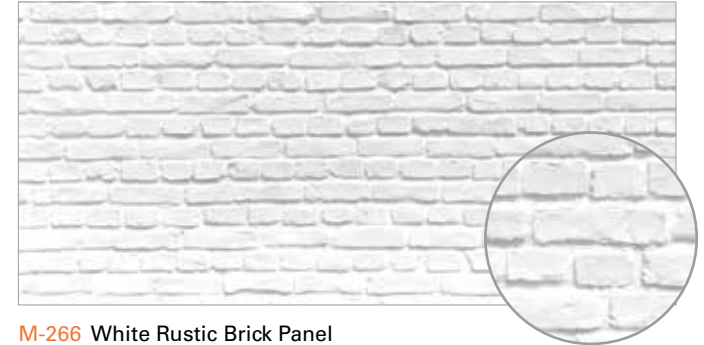




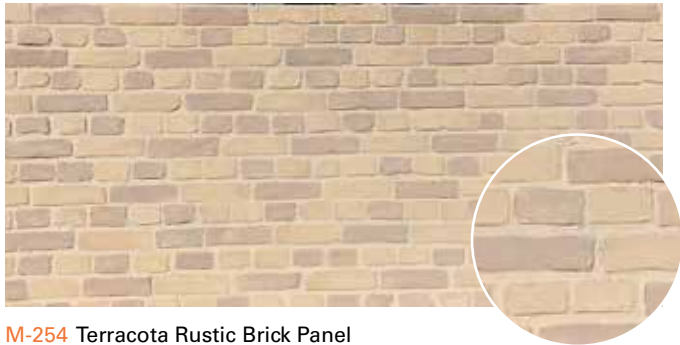
**M-268** Calcine Rustic Brick Panel  
Panel Ladrillo Rústico Calcinado



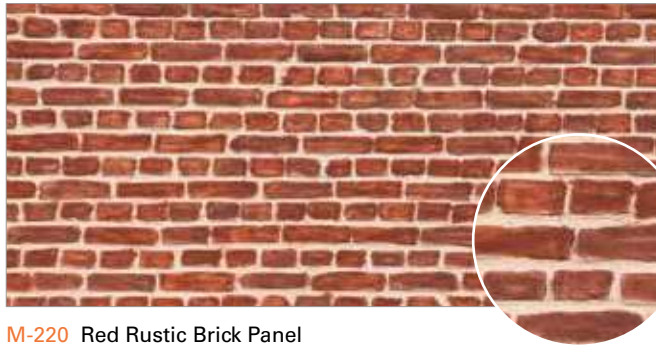
**M-267** Roasted Rustic Brick Panel  
Panel Ladrillo Rústico Tostado



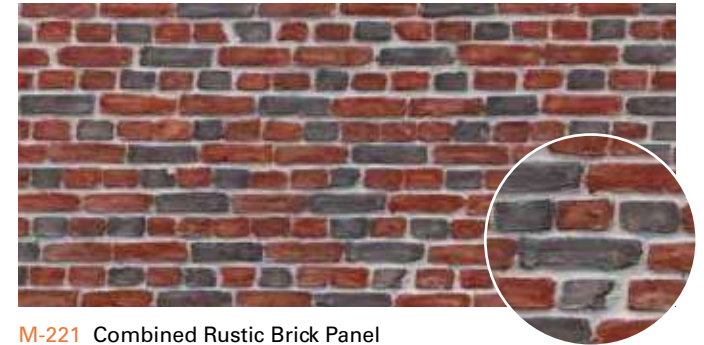
**M-266** White Rustic Brick Panel  
Panel Ladrillo Rústico Blanco



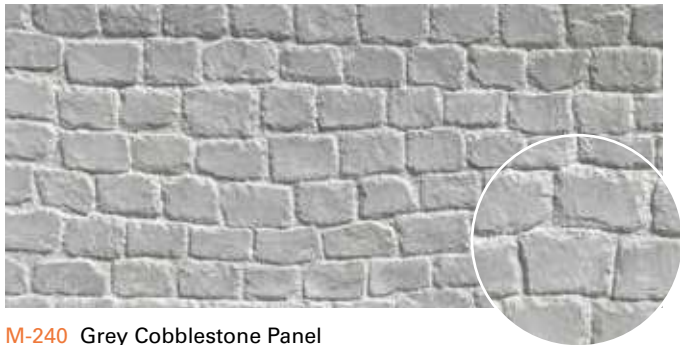
**M-254** Terracota Rustic Brick Panel  
Panel Ladrillo Rústico Terracota



**M-220** Red Rustic Brick Panel  
Panel Ladrillo Rústico Rojo



**M-221** Combined Rustic Brick Panel  
Panel Ladrillo Rústico Combinado



**M-240** Grey Cobblestone Panel  
Panel Adoquín Gris

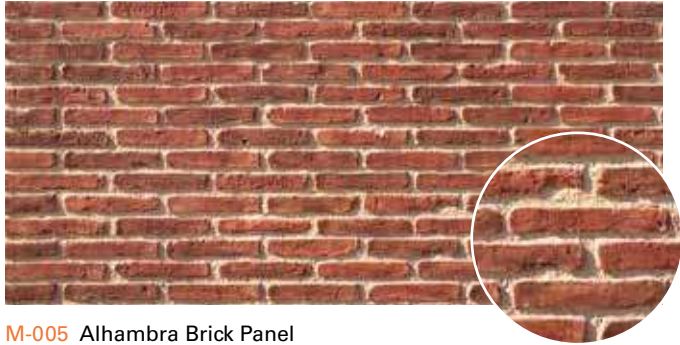


**M-241** Ochre Cobblestone Panel  
Panel Adoquín Ocre



**M-248** Scrubbed White Cobblestone Panel  
Panel Adoquín Blanco Restregado





**M-005** Alhambra Brick Panel  
Panel Ladrillo Alhambra



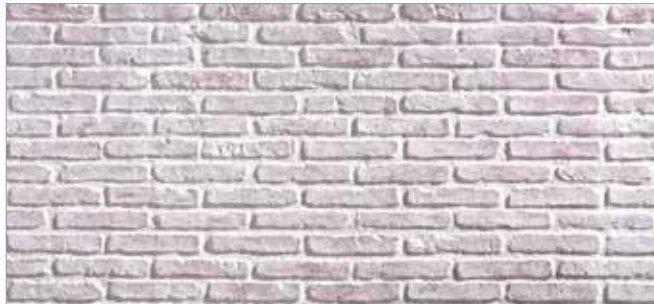
**M-007** Bi-colour Alhambra Brick Panel  
Panel Ladrillo Alhambra Bicolor



**M-019** White Alhambra Brick Panel  
Panel Ladrillo Alhambra Blanco



**M-027** Terracota Alhambra Brick Panel  
Panel Ladrillo Alhambra Terracota



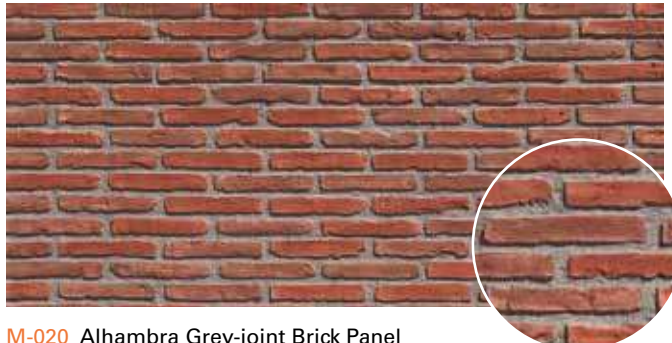
**M-272** Scrubbed White Alhambra Brick Panel  
Panel Ladrillo Alhambra Blanco Restregado



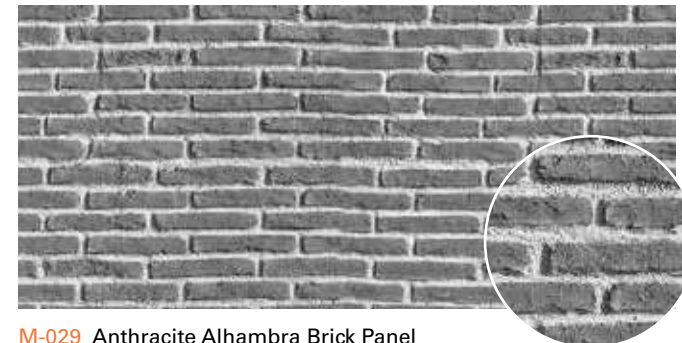
**M-026** Argan Alhambra Brick Panel  
Panel Ladrillo Alhambra Argan



**M-006** Ochre Alhambra Brick Panel  
Panel Ladrillo Alhambra Ocre



**M-020** Alhambra Grey-joint Brick Panel  
Panel Ladrillo Alhambra - Junta Gris



**M-029** Anthracite Alhambra Brick Panel  
Panel Ladrillo Alhambra Antracita





**M-051** Grey Dry Stone Panel  
Panel Piedra Seca Gris



**M-053** Ochre Dry Stone Panel  
Panel Piedra Seca Ocre



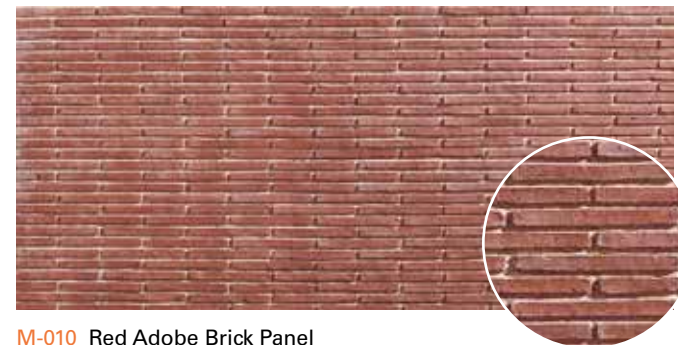
**M-054** Brown Dry Stone Panel  
Panel Piedra Seca Marrón



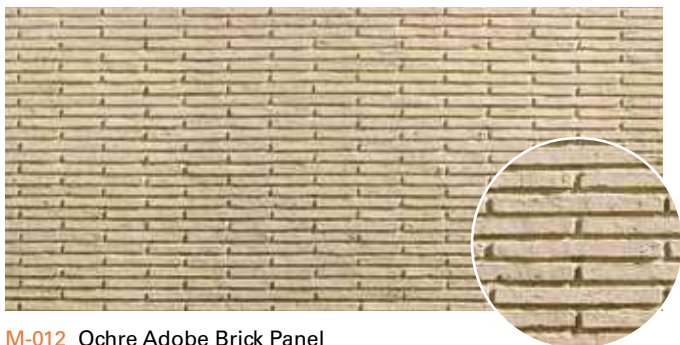
**M-055** Blue Dry Stone Panel  
Panel Piedra Seca Azul



**M-056** Inverted Dry Stone Panel  
Panel Piedra Seca Invertida



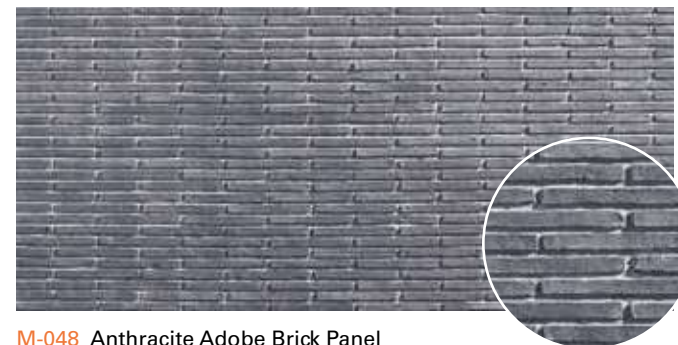
**M-010** Red Adobe Brick Panel  
Panel Ladrillo Adobe Rojo



**M-012** Ochre Adobe Brick Panel  
Panel Ladrillo Adobe Ocre

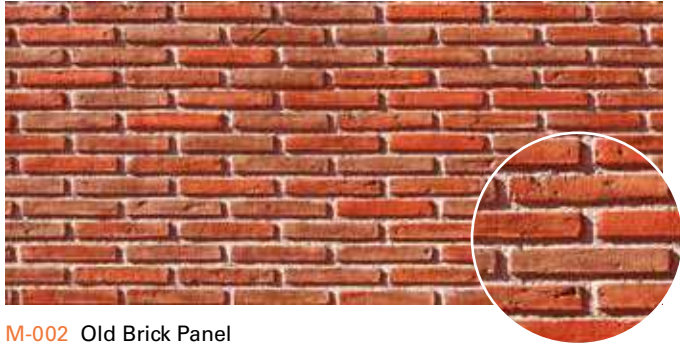


**M-013** Bicolour Adobe Brick Panel  
Panel Ladrillo Adobe Bicolor



**M-048** Anthracite Adobe Brick Panel  
Panel Ladrillo Adobe Antracita

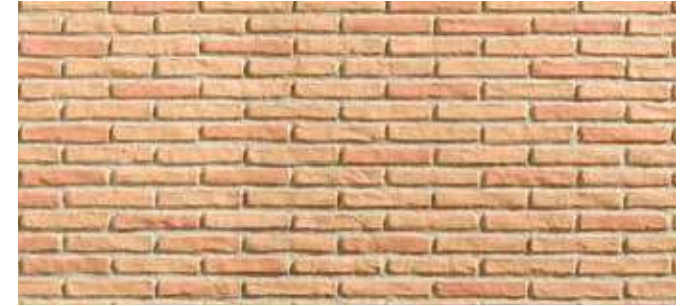




**M-002** Old Brick Panel  
Panel Ladrillo Viejo



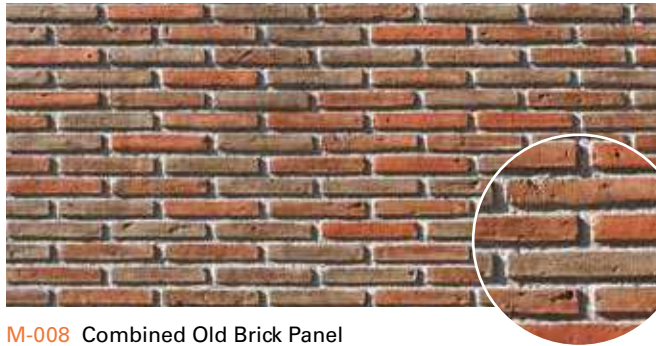
**M-004** Ochre Old Brick Panel  
Panel Ladrillo Viejo Ocre



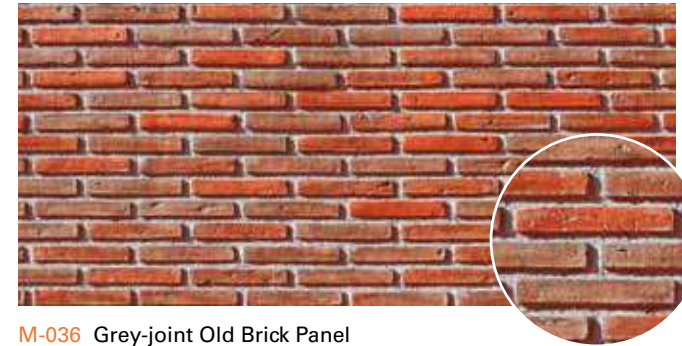
**M-037** Bicolour Old Brick Panel  
Panel Ladrillo Viejo Bicolor



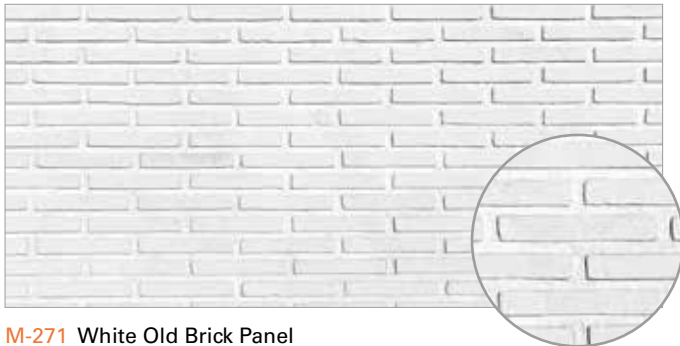
**M-003** Scrubbed White Old Brick Panel  
Panel Ladrillo Viejo Blanco Restregado



**M-008** Combined Old Brick Panel  
Panel Ladrillo Viejo Combinado



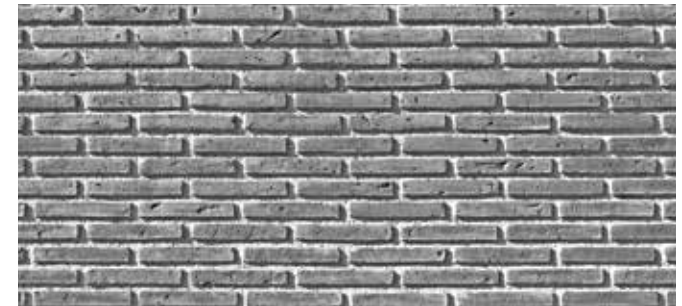
**M-036** Grey-joint Old Brick Panel  
Panel Ladrillo Viejo - Junta Gris



**M-271** White Old Brick Panel  
Panel Ladrillo Viejo Blanco



**M-018** Terracota Old Brick Panel  
Panel Ladrillo Viejo Terracota



**M-078** Anthracite Old Brick Panel  
Panel Ladrillo Viejo Antracita





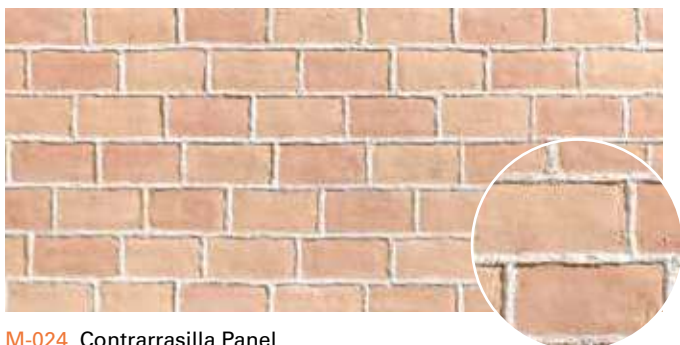
**M-021** Classic Rasilla Panel  
Panel Rasilla Clasica



**M-023** Ochre Rasilla Panel  
Panel Rasilla Ocre



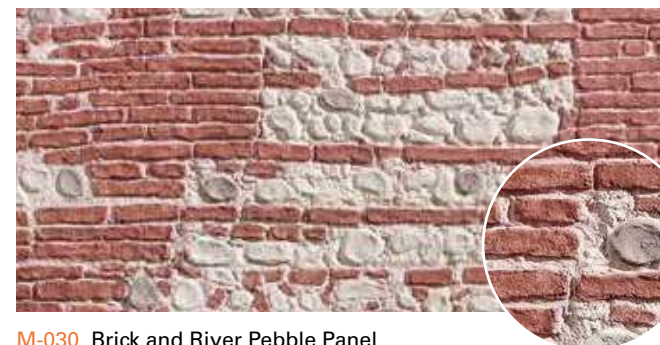
**M-069** Anthracite Rasilla Panel  
Panel Rasilla Antracita



**M-024** Contrarrasilla Panel  
Panel Contrarrasilla



**M-025** Toscana Rasilla Panel  
Panel Rasilla Toscana



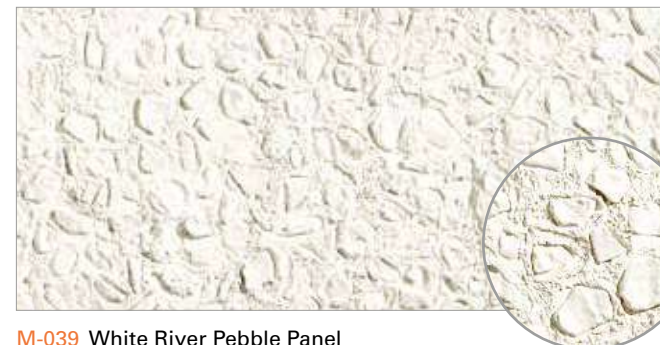
**M-030** Brick and River Pebble Panel  
Panel Ladrillo y Piedra de Rio



**M-034** River Pebble and Brick Panel  
Panel Piedra de Rio y Ladrillo



**M-038** River Pebble Panel  
Panel Piedra de Rio



**M-039** White River Pebble Panel  
Panel Piedra de Rio Blanco





**M-097** Grey Laja Stone Panel  
Panel Laja Gris



**M-099** Ochre Laja Stone Panel  
Panel Laja Ocre



**M-122** Multicolored Laja Stone Panel  
Panel Laja Multicolor



**M-124** Dark Sand Laja Stone Panel  
Panel Laja Tierra Oscura



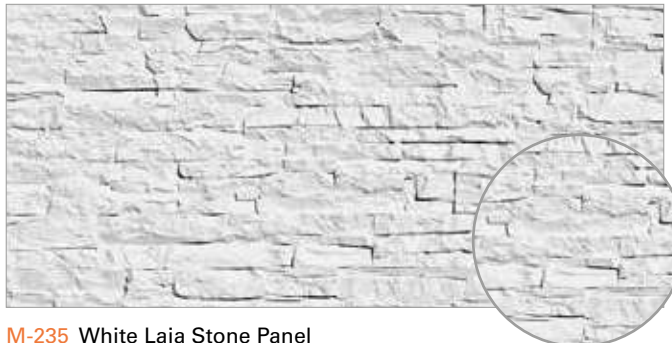
**M-126** Clear Laja Stone Panel  
Panel Laja Clara



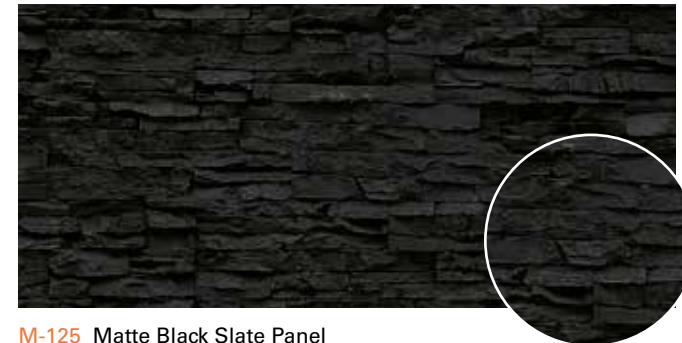
**M-098** Black Forge Laja Stone Panel  
Panel Laja Negra Forja



**M-123** Brown Laja Stone Panel  
Panel Laja Marrón



**M-235** White Laja Stone Panel  
Panel Laja Blanca



**M-125** Matte Black Slate Panel  
Panel Laja Negra Mate





**M-080** Grey Large Stones Panel  
Panel Piedras Grandes Gris



**M-082** Ochre Large Stones Panel  
Panel Piedras Grandes Ocre



**M-083** Multicolour Large Stones Panel  
Panel Piedras Grandes Multicolor



**M-114** Grey Limestone Panel  
Panel Piedra Caliza Gris



**M-115** Ochre Limestone Panel  
Panel Piedra Caliza Ocre



**M-116** Brown Limestone Panel  
Panel Piedra Caliza Marrón



**M-117** Clear Limestone Panel  
Panel Piedra Caliza Clara



**M-118** Anthracite Limestone Panel  
Panel Piedra Caliza Antracita

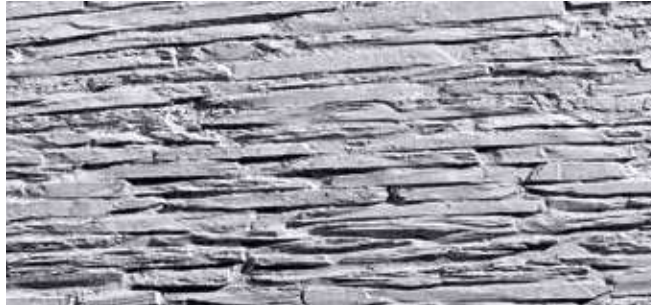


**M-110** Miranda Stone Panel  
Panel Piedra Miranda

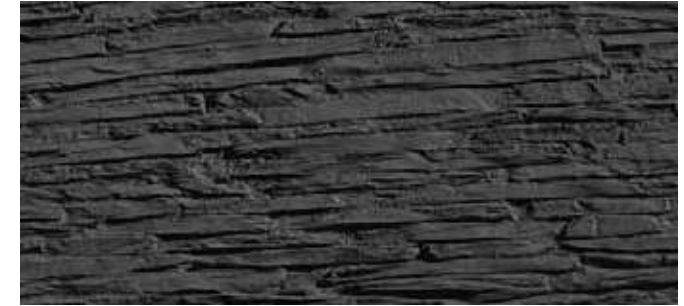




**M-093** Two-tone Slate Panel  
Panel Pizarra Bitono



**M-091** Grey Slate Panel  
Panel Pizarra Gris



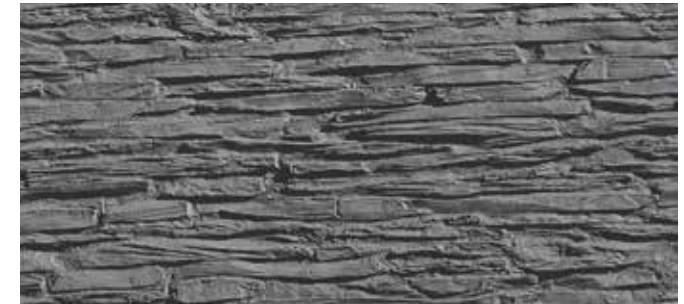
**M-094** Matte Black Slate Panel  
Panel Pizarra Negra Mate



**M-088** Dark Slate Panel  
Panel Pizarra Oscura



**M-089** Ochre Slate Panel  
Panel Pizarra Ocre



**M-095** Forge Black Slate Panel  
Panel Pizarra Negro Forja



**M-065** Red Solid Cobblestone Panel  
Panel Adoquín Macizo Rojo

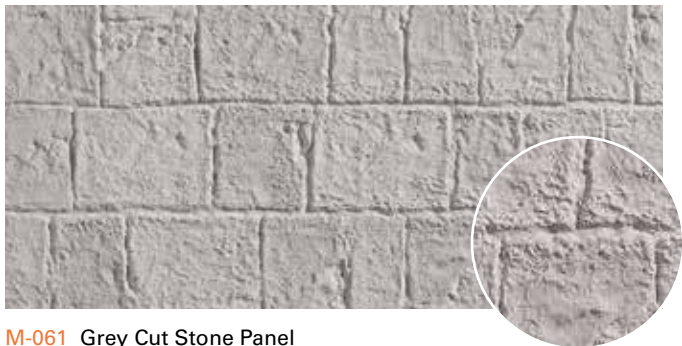


**M-066** Ochre Solid Cobblestone Panel  
Panel Adoquín Macizo Ocre



**M-067** Grey Solid Cobblestone Panel  
Panel Adoquín Macizo Gris





**M-061** Grey Cut Stone Panel  
Panel Piedra Tallada Gris



**M-063** Ochre Cut Stone Panel  
Panel Piedra Tallada Ocre



**M-064** Siena Cut Stone Panel  
Panel Piedra Tallada Siena



**M-216** Grey Ascona Stone Panel  
Panel Piedra Ascona Gris



**M-217** Ochre Ascona Stone Panel  
Panel Piedra Ascona Ocre



**M-218** Brown Ascona Stone Panel  
Panel Piedra Ascona Marrón



**M-219** White Ascona Stone Panel  
Panel Piedra Ascona Blanca

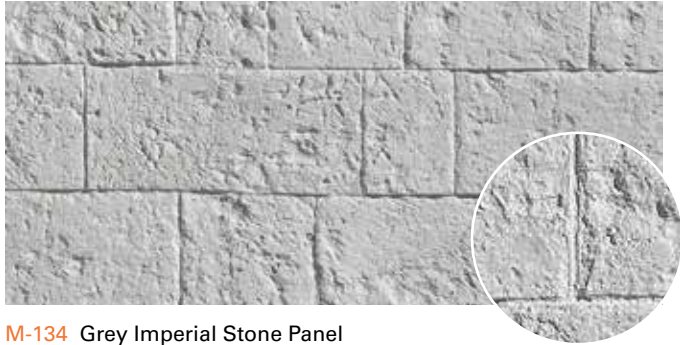


**M-085** Majorca Stone Panel  
Panel Piedra Mallorquina



**M-180** Galician Slate Panel  
Panel Pizarra Gallega





**M-134** Grey Imperial Stone Panel  
Panel Piedra Imperial Gris



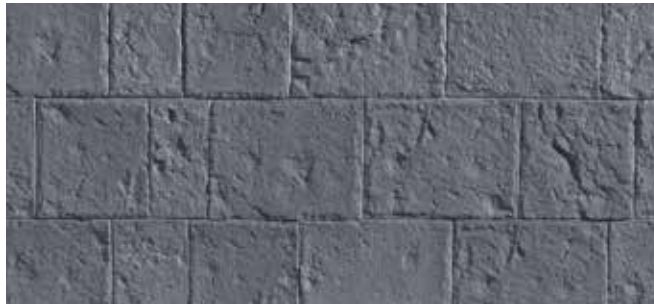
**M-135** Ochre Imperial Stone Panel  
Panel Piedra Imperial Ocre



**M-136** Siena Imperial Stone Panel  
Panel Piedra Imperial Siena



**M-138** Clear Imperial Stone Panel  
Panel Piedra Imperial Clara



**M-146** Anthracite Imperial Stone Panel  
Panel Piedra Imperial Antracita



**M-070** Grey Ginestar Stone Panel  
Panel Piedra Ginestar Gris



**M-074** Ochre Ginestar Stone Panel  
Panel Piedra Ginestar Ocre

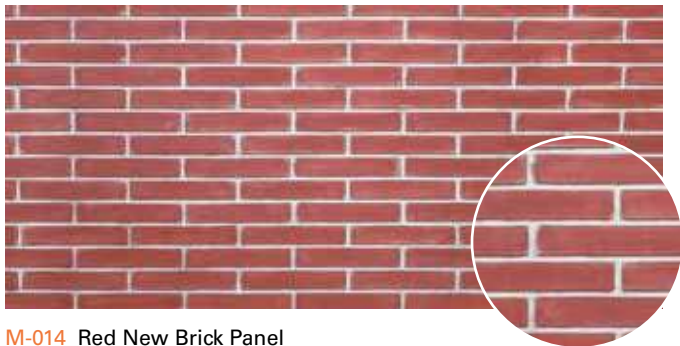


**M-072** Red Ginestar Stone Panel  
Panel Piedra Ginestar Roja



**M-076** Special Ginestar Stone Panel  
Panel Piedra Ginestar Especial





**M-014** Red New Brick Panel  
Panel Ladrillo Nuevo Rojo



**M-015** Ochre New Brick Panel  
Panel Ladrillo Nuevo Ocre



**M-270** White New Brick Panel  
Panel Ladrillo Nuevo Blanco



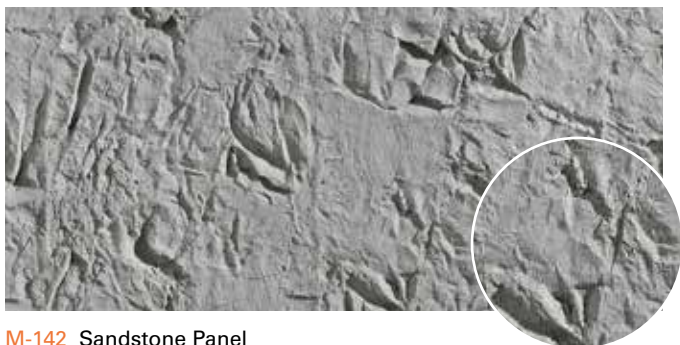
**M-269** London New Brick Panel  
Panel Ladrillo Nuevo London



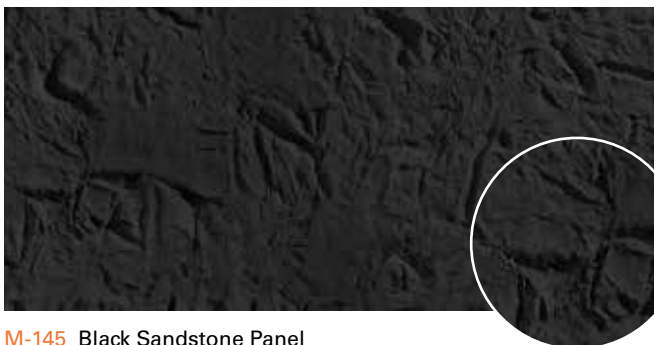
**M-263** Bicolour New Brick Panel  
Panel Ladrillo Nuevo Bicolor



**M-160** Joint-Coloured Stucco Panel  
Panel Estuco Junta



**M-142** Sandstone Panel  
Panel Arenisca



**M-145** Black Sandstone Panel  
Panel Arenisca Negra



**M-164** Staff Panel  
Panel Staff Junta





**M-237** Ochre Alpina Stone Panel  
Panel Piedra Alpina Ochre



**M-236** Multicoloured Alpina Stone Panel  
Panel Piedra Alpina Multicolor



**M-239** Grey Alpina Stone Panel  
Panel Piedra Alpina Gris



**M-229** Matte Black Alpina Stone Panel  
Panel Piedra Alpina Negro Mate



**M-234** White Alpina Stone Panel  
Panel Piedra Alpina Blanca



**M-100** Grey Kahala Stone Panel  
Panel Piedra Kahala Gris



**M-102** Reddish Kahala Stone Panel  
Panel Piedra Kahala Rojiza

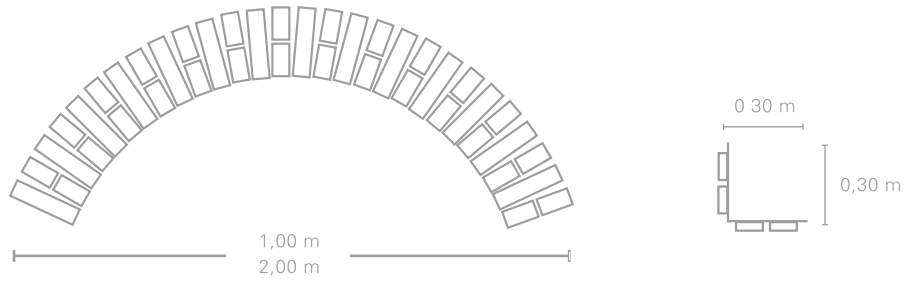


**M-040** Opus Spicatum Panel  
Panel Opus Spicatum



**M-191** Bicolour RoofTile Panel  
Panel Teja Bicolor



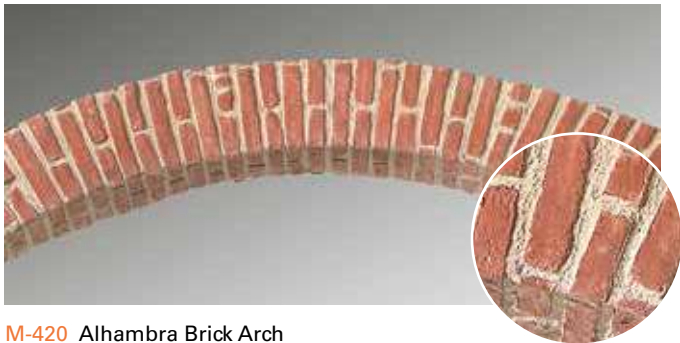


Size  
6'5/9" x (62/63" x 62/63")

Surface Area  
1,88 sqm

Medidas  
2,00 m x (0,30 x 0,30) m

Superficie  
1,88 m<sup>2</sup>



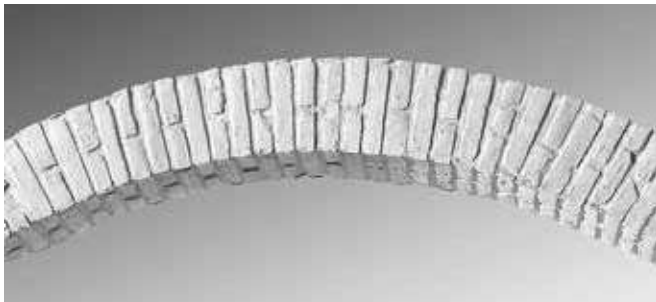
**M-420** Alhambra Brick Arch  
Arco Ladrillo Alhambra



**M-421** Ochre Alhambra Brick Arch  
Arco Ladrillo Alhambra Ocre



**M-425** Bicolour Alhambra Brick Arch  
Arco Ladrillo Alhambra Bicolor



**M-413** Scrubbed White Alhambra Brick Arch  
Arco Ladrillo Alhambra Blanco Restregado



**M-500** Grey Ashlar Stone Arch  
Arco en Piedra Sillar Gris



**M-029** Ochre Ashlar Stone Arch  
Arco en Piedra Sillar Ocre

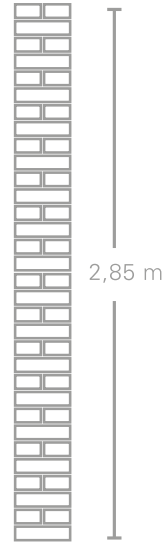




**M-310 Alhambra Brick Angle**  
Ángulo Ladrillo Alhambra



**M-312 Ochre Alhambra Brick Panel**  
Ángulo Ladrillo Alhambra Ocre

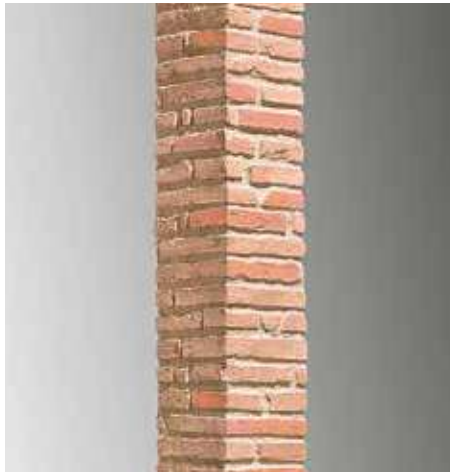
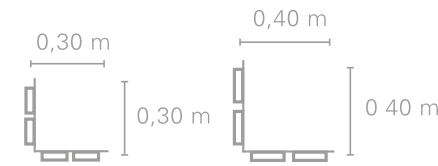


**Size**  
9'1/3" x (62/63" x 62/63") - 9'1/3" x (1'5/16" x 1'5/16")

**Surface Area**  
1,71 sqm - 2,28 sqm

**Medidas**  
2,85 m x (0,30 x 0,30) m · 2,85 m x (0,40 x 0,40) m

**Superficie**  
1,71 m<sup>2</sup> · 2,28 m<sup>2</sup>



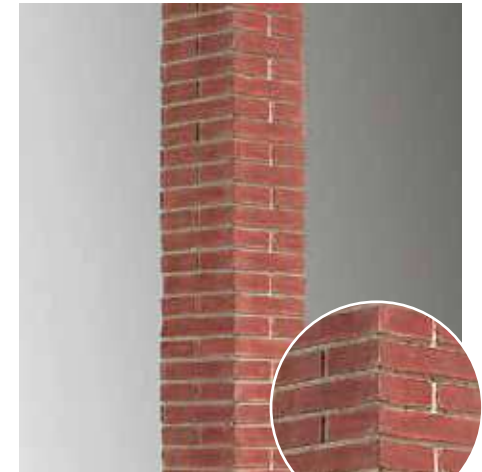
**M-324 Bicolour Alhambra Brick Panel**  
Ángulo Ladrillo Alhambra Bicolor



**M-330 Grey Cut Stone Angle**  
Ángulo Piedra Tallada Gris



**M-335 Ochre Cut Stone Angle**  
Ángulo Piedra Tallada Ocre



**M-351 New Brick Angle**  
Ángulo Ladrillo Nuevo Rojo



# TOTALDesign<sup>®</sup>, FREEDOM TO CHOOSE

Our design offer the most updated style and solutions, creative concepts for the possible environments as well as the unthinkable ones. The new trends demand suitable solutions for innovative technics. Without dismissing the result of the visual effect.

Our panelling system submits to the current market and lets you create amazing atmosphere that achieve the big challenges o imagination.

Climbing to the top, beyond the limits with freedom. Your choice is a question of time.

# TOTALDesign<sup>®</sup>, LIBERTAD DE ELECCIÓN

Diseños que consiguen soluciones vanguardistas, conceptos creativos para todos los espacios posibles. Y para los imposibles. Las nuevas tendencias exigen soluciones innovadoras técnicas y estéticas.

Nuestro sistema de paneles responde a las nuevas demandas, y permite proyectar ambientes singulares, para estar a la altura de los grandes retos de la imaginación.

Combinar hasta el infinito, traspasar los límites con libertad. La elección es cuestión de tiempo.



by KA<sup>®</sup> Coverings





**TOTALDesign<sup>®</sup>**

Evolution · Evolución



TOTALDesign®

M-176





TOTALDesign®

M-290



TOTALDesign®

M-171





TOTALDesign®

M-293





TOTALDesign®

M-279





TOTALDesign®

M-250





M-176



M-164





M-177



M-291



M-289





M-210



M-159



M-154



M-286





M-172



M-171



M-175





M-175

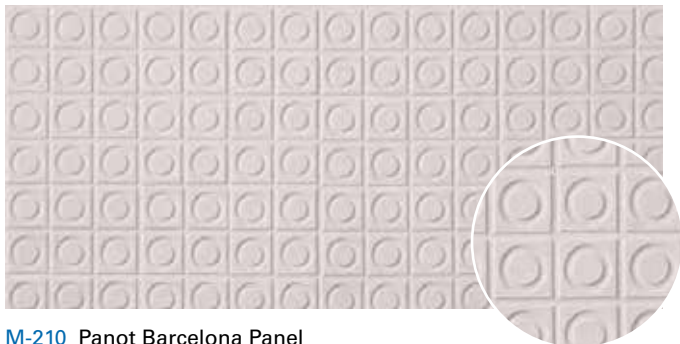


M-276

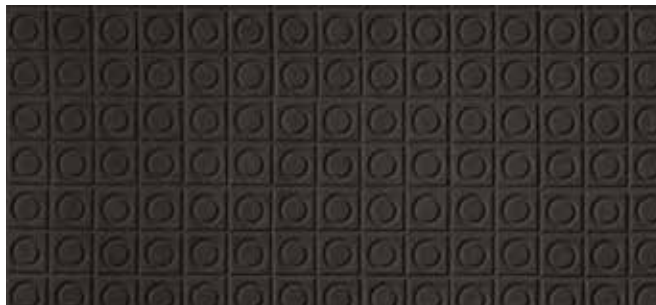


M-172





**M-210** Panot Barcelona Panel  
Panel Panot Barcelona



**M-211** Black Panot Barcelona Panel  
Panel Panot Barcelona Negro



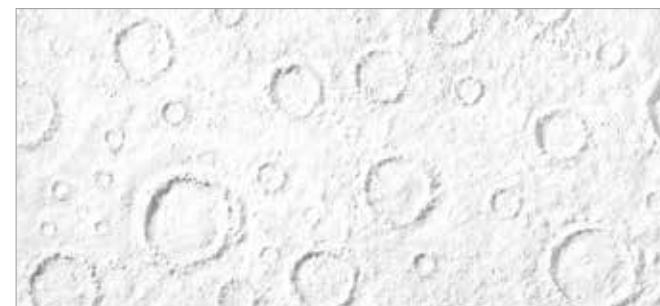
**M-212** White Panot Barcelona Panel  
Panel Panot Barcelona Blanco



**M-250** Grey Moon Panel  
Panel Lunar Gris



**M-252** Rusty Lunar Panel  
Panel Lunar Oxidado



**M-253** White Moon Panel  
Panel Lunar Blanco



**M-291** White Dakar Panel  
Panel Dakar Blanco

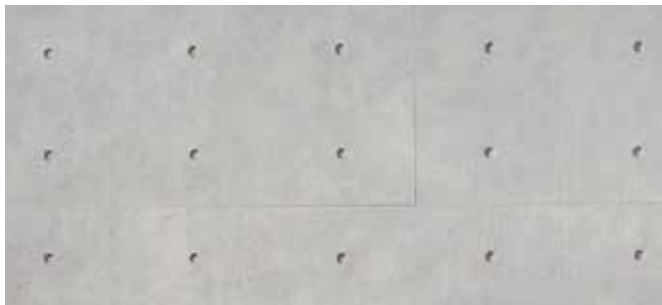


**M-290** Dakar Panel  
Panel Dakar



**M-262** Grey Dakar Panel  
Panel Dakar Gris





**M-171 Concrete Panel**  
Panel Cemento Encofrado



**M-172 Rusty Concrete Panel**  
Panel Cemento Encofrado Oxidado



**M-173 Anthracite Concrete Panel**  
Panel Cemento Encofrado Antracita



**M-176 Rustic Concrete Panel**  
Panel Hormigón



**M-177 Anthracite Rustic Concrete Panel**  
Panel Hormigón Antracita



**M-178 Rusty Rustic Concrete Panel**  
Panel Hormigón Oxidado



**M-175 Grated Concrete Panel**  
Panel Hormigón Rayado



**M-179 Anthracite Grated Concrete Panel**  
Panel Hormigón Rayado Antracita



**M-182 Rusty Grated Concrete Panel**  
Panel Hormigón Rayado Oxidado





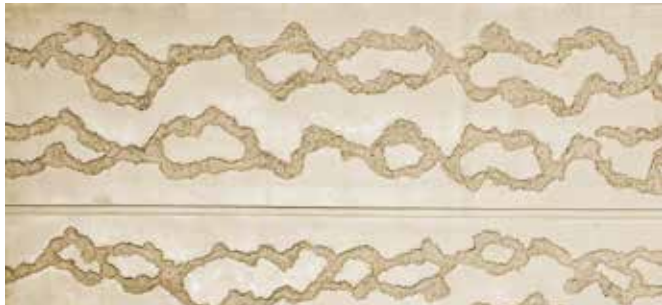
**M-140 Sand Panel**  
Panel en Arena



**M-147 Cobalt Sand Panel**  
Panel en Arena Cobalto



**M-144 Rusty Sand Panel**  
Panel en Arena Oxidada



**M-255 Natural Nitrate Panel**  
Panel Nitrato Natural



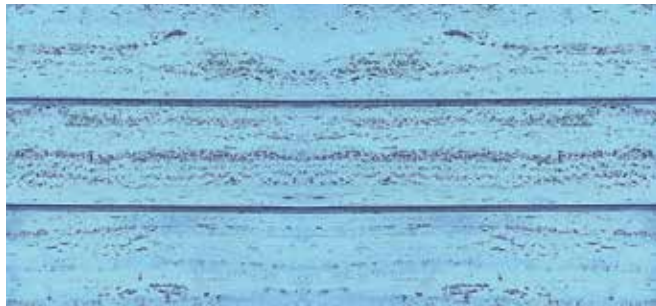
**M-256 Silver Nitrate Panel**  
Panel Nitrato Plata



**M-257 Gold Nitrate Panel**  
Panel Nitrato Oro



**M-276 Natural Travertine Panel**  
Panel Travertino Natural



**M-277 Blue Travertine Panel**  
Panel Travertino Azul



**M-278 Grey Travertine Panel**  
Panel Travertino Gris





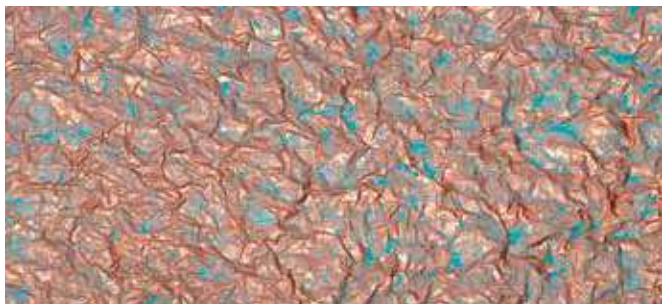
**M-279** Crusted Design Panel  
Panel Estrujado Design



**M-280** Crusted Gold Panel  
Panel Estrujado Oro



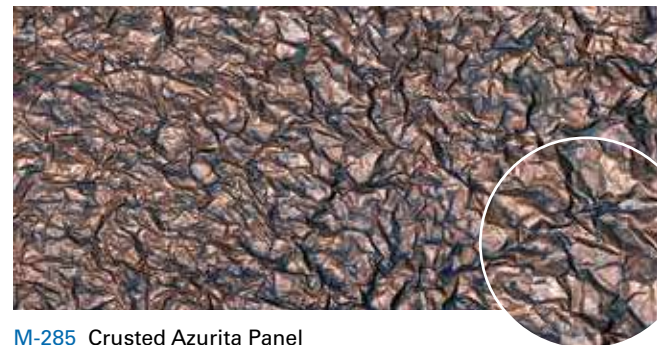
**M-281** Crusted Silver Panel  
Panel Estrujado Plata



**M-282** Crusted Bronze Panel  
Panel Estrujado Bronce



**M-283** Crusted Cobalt Panel  
Panel Estrujado Cobalto



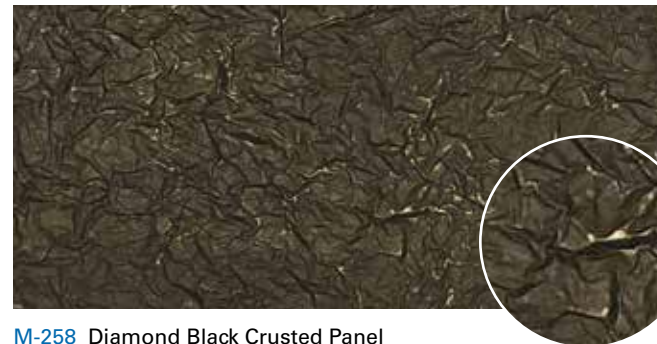
**M-285** Crusted Azurita Panel  
Panel Estrujado Azurita



**M-289** Crusted Baroque Panel  
Panel Estrujado Barroco

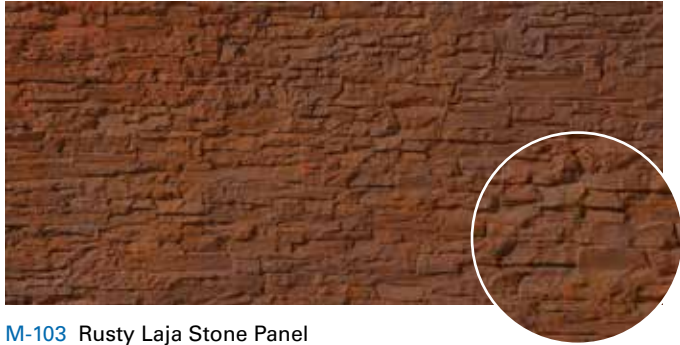


**M-286** Crusted Copper Panel  
Panel Estrujado Cobrizo



**M-258** Diamond Black Crusted Panel  
Panel Estrujado Negro Brillo





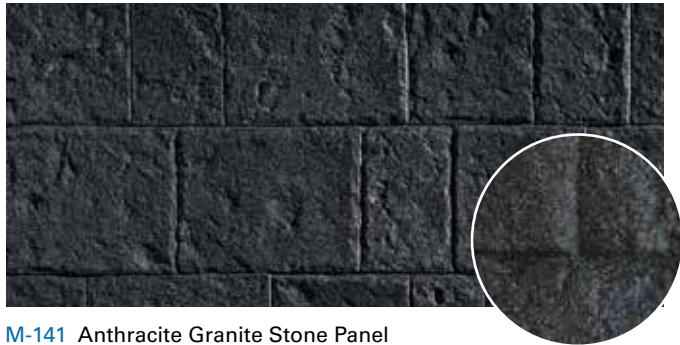
**M-103** Rusty Laja Stone Panel  
Panel Piedra Laja Oxidada



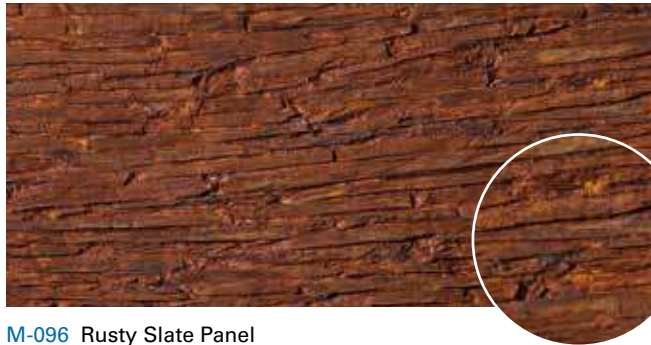
**M-230** Mosaic Roman Panel  
Panel Mosaico Romano



**M-139** Grey Granite Stone Panel  
Panel Piedra Granito Gris



**M-141** Anthracite Granite Stone Panel  
Panel Piedra Granito Antracita



**M-096** Rusty Slate Panel  
Panel Pizarra Oxidada



**M-287** Crusted Rusty Panel  
Panel Estrujado Oxidado



**M-292** Ochre Bamboo Panel  
Panel Bamboo Ocre



**M-293** Green Bamboo Panel  
Panel Bamboo Verde



**M-294** Iroko Bamboo Panel  
Panel Bamboo Iroko



# TOTAL Wood<sup>®</sup>, INNOVATION AS A TRADITION

We do not impose styles, we combine them to enrich and personalize any atmosphere. We value contrast. Merging classic and modern elements we obtain daring and amazing effects. We admire wood reproducing it without damaging or consuming it.

Natural or painted wood reproductions which balances spaces generating serenity.

# TOTAL Wood<sup>®</sup>, INNOVAR COMO TRADICIÓN

No imponemos estilos, jugamos a combinarlos para enriquecer y personalizar todos los ambientes. Valoramos los contrastes. Efectos atrevidos y sorprendentes que se consiguen mezclando elementos antiguos y contemporáneos. Admiramos la madera, por eso la reproducimos sin dañarla ni consumirla.

Reproducciones de madera natural o pintada que equilibran los espacios y les dan serenidad.



by KA<sup>®</sup> Coverings





**TOTALWood**<sup>®</sup>

Solutions · Soluciones



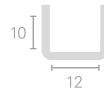
## BEAMS · VIGAS



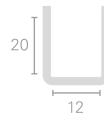
**M-750** V-930  
5 x 9 x 285 cm  
1,96 x 3,54 x 112,20 inch



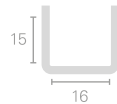
**M-740** V-630  
10 x 12 x 285 cm  
3,93 x 4,72 x 112,20 inch



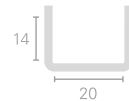
**M-745** V-730  
20 x 12 x 285 cm  
7,87 x 4,72 x 112,20 inch



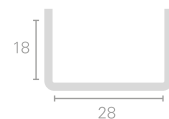
**M-730** V-430  
15 x 16 x 285 cm  
5,90 x 6,29 x 112,20 inch



**M-720** V-230  
14 x 20 x 285 cm  
5,51 x 7,87 x 112,20 inch



**M-710** V-130  
18 x 28 x 285 cm  
7,08 x 11,02 x 112,20 inch



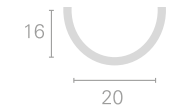
**M-700** V-000  
24 x 47 x 285 cm  
9,44 x 18,50 x 112,20 inch



**M-755** R-017  
12 x 17 x 285 cm  
4,72 x 6,69 x 112,20 inch



**M-760** R-020  
16 x 20 x 285 cm  
6,29 x 7,87 x 112,20 inch



## BRACKETS · MÉNSULAS



**M-770** M-900  
6 x 11 x 9 cm  
2,36 x 4,33 x 3,54 inch



**M-772** M-600  
10 x 13 x 11 cm  
3,93 x 5,11 x 4,33 inch



**M-776** M-400  
17 x 22 x 17 cm  
6,69 x 8,66 x 6,69 inch



**M-774** M-300  
28 x 41 x 15 cm  
11,02 x 16,14 x 5,90 inch

## AUXILIARITY MATERIALS · MATERIALES AUXILIARES



**T-080** Paint  
(0,30 gallons)  
Tintura (0,15l)



**T-090** Iron Joint  
(1 meter / 3,28 f)  
Hierro de unión (1 metro)

Approximate measurements | Medidas aproximadas







TOTALWood®

M-155

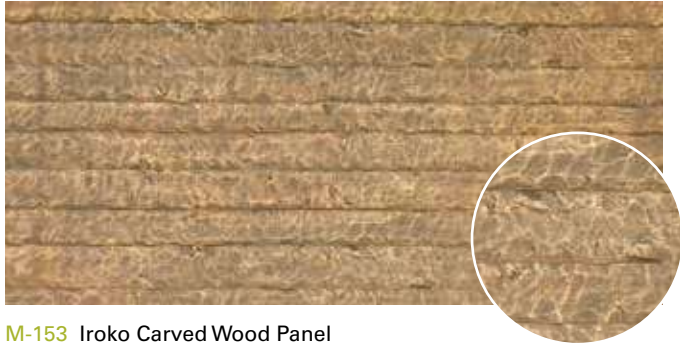




TOTALWood®

M-154





**M-153** Iroko Carved Wood Panel  
Panel Madera Tallada Iroko



**M-161** Oak Carved Wood Panel  
Panel Madera Tallada Roble



**M-162** Teak Carved Wood Panel  
Panel Madera Tallada Teca



**M-151** Natural Carved Wood Panel  
Panel Madera Tallada Natural



**M-154** Iroko Plank Wood Panel  
Panel Tablón Iroko



**M-169** Teak Plank Wood Panel  
Panel Tablón Teca



**M-275** Oak Plank Wood Panel  
Panel Tablón Roble



**M-168** Natural Plank Wood Panel  
Panel Tablón Natural



**M-170** Wooden Wall Panel  
Panel Tablón Encofrado

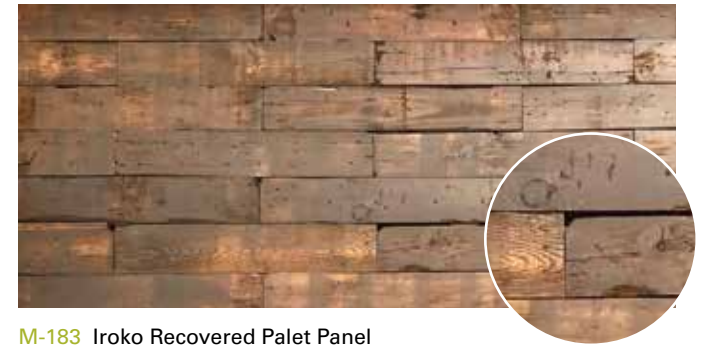




**M-155 Slat Board Panel**  
Panel Tablas



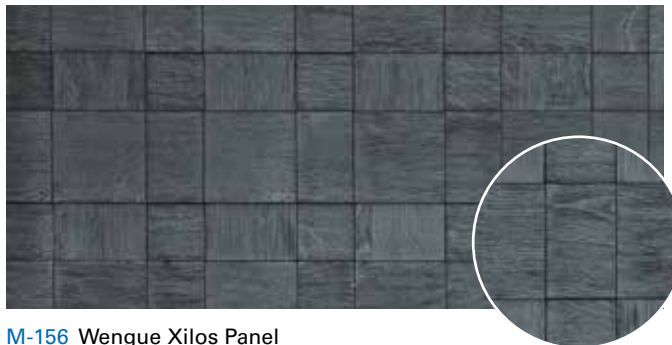
**M-187 Natural Slat Board Panel**  
Panel Tablas Natural



**M-183 Iroko Recovered Palet Panel**  
Panel Recu-Palet IroKo



**M-159 Light Xilos Panel**  
Panel Xilos Claro



**M-156 Wengue Xilos Panel**  
Panel Xilos Wengue



**M-158 Xilos Wengue Copper Panel**  
Panel Xilos Wengue Cobre



Walnut Colour | Color Nogal



Iroko Colour | Color Iroko



Patinas | Patinas



Oak Colour | Color Roble



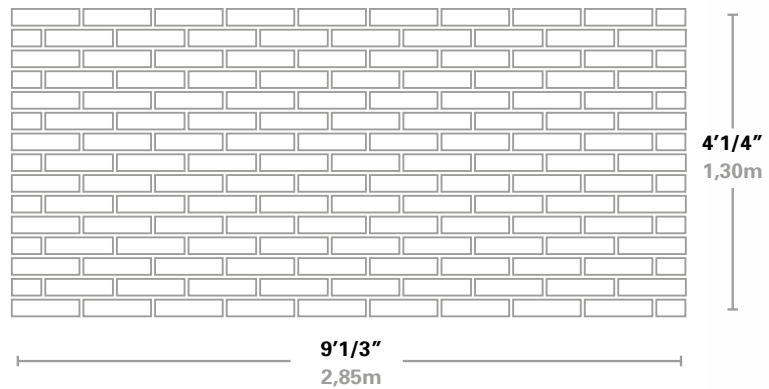
Teak Colour | Color Teca



Patinas | Patinas

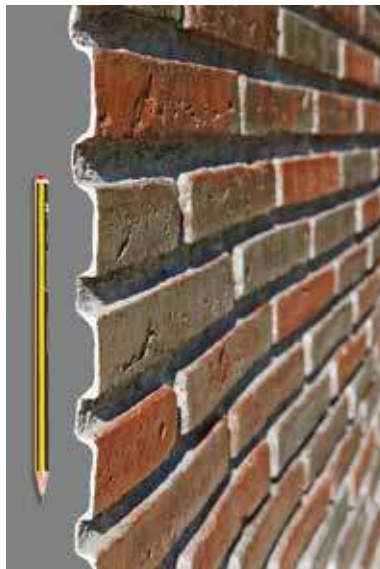




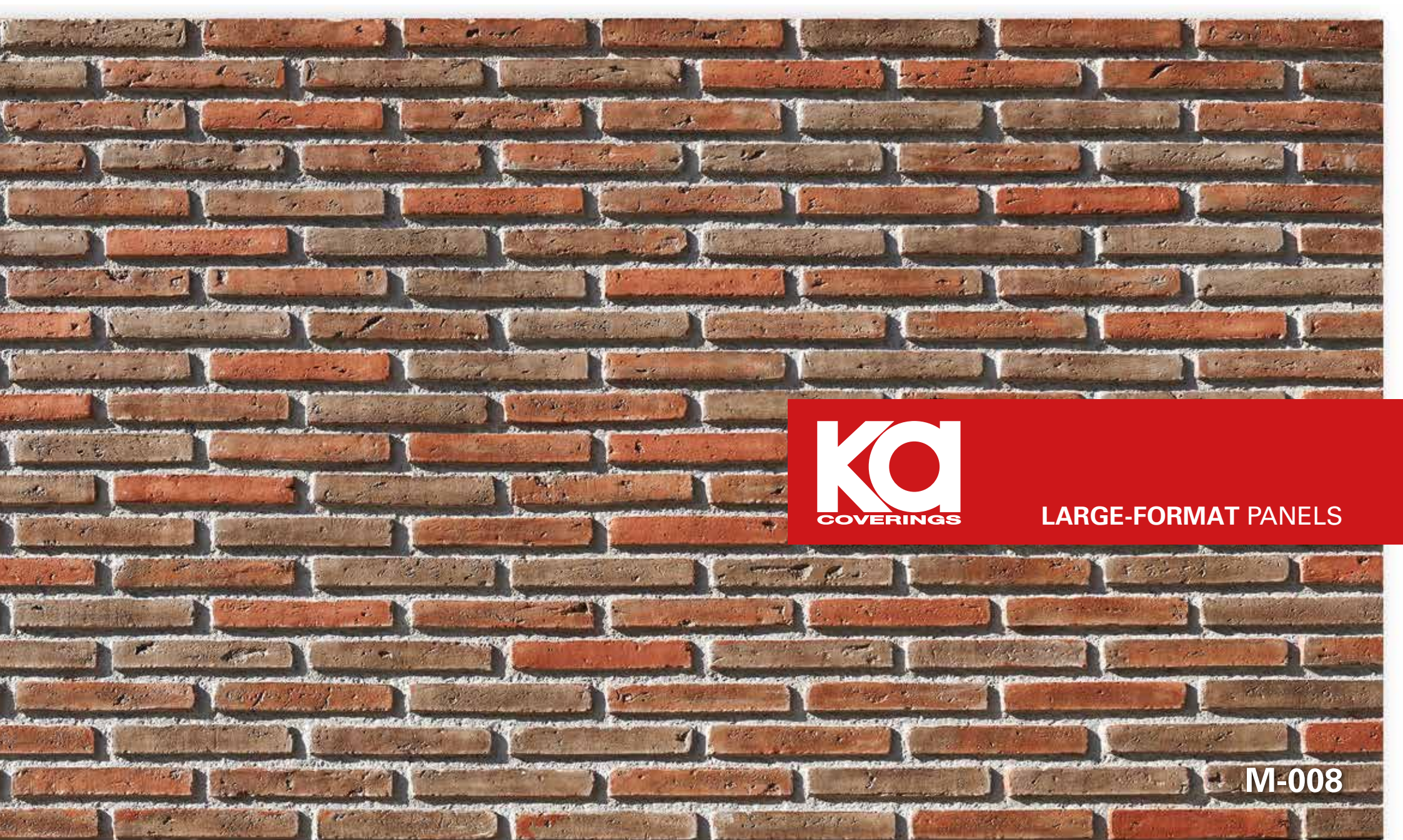


Size | Medidas  
9'1/3" x 4'1/4"  
2,85 x 1,30 m

Surface Area | Superficie  
3,70 sqm  
3,70 m<sup>2</sup>







LARGE-FORMAT PANELS

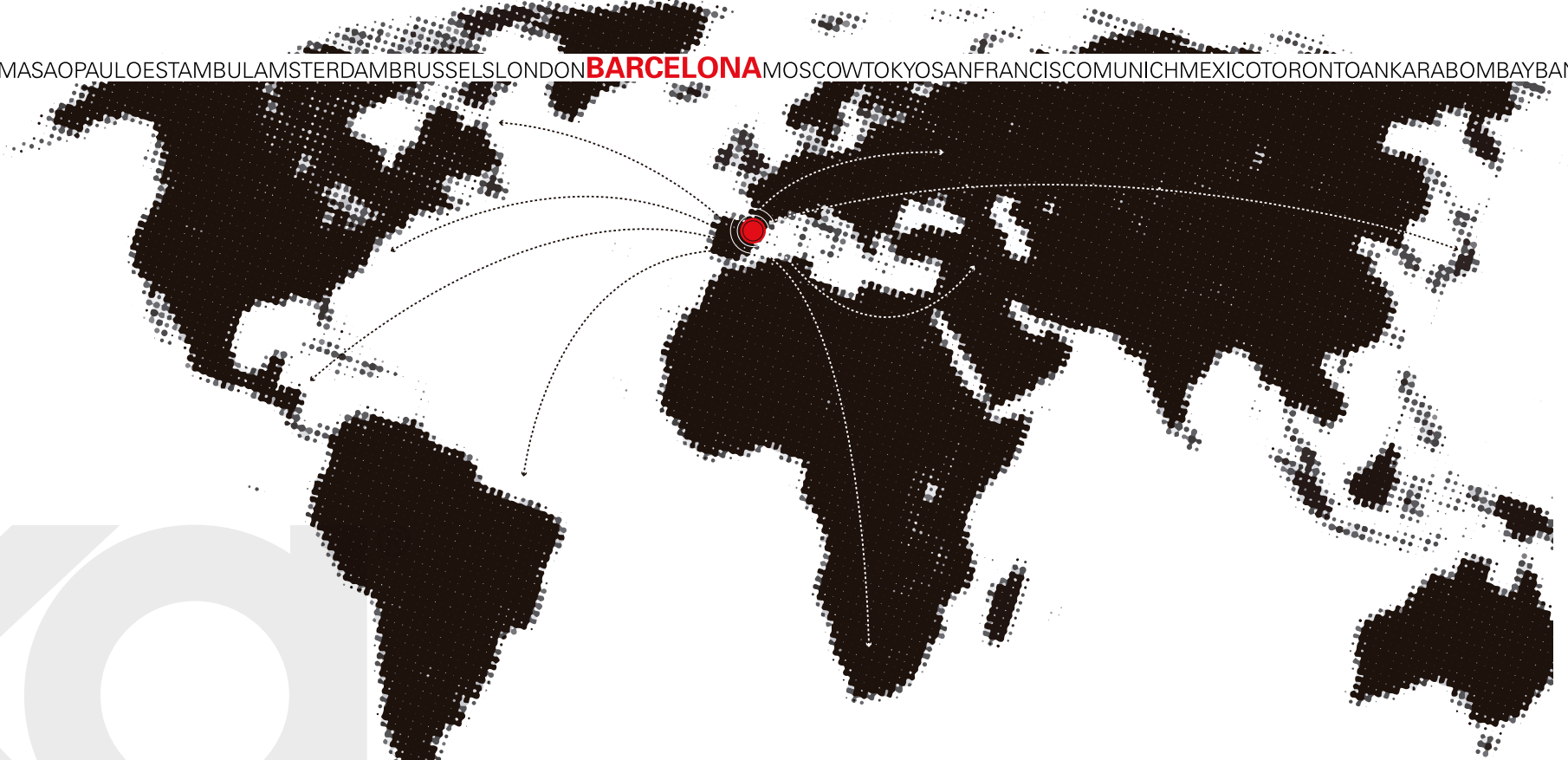
M-008

**9'1/3" width x 4'1/4" height | 2,85 m largo x 1,30 m alto**



# FROM **BARCELONA** TO THE WORLD

PARISBELGRADOMILANROMASAOPAULOESTAMBULAMSTERDAMBRUSSELSLONDON**BARCELONA**MOSCOWTOKYOSANFRANCISCO MUNICHMEXICOTORONTOANKARABOMBAYBANGKOKNE



**KQ**  
COVERINGS





Although we could find hundreds of features to define our products, we could summaries the most outstanding ones as follows:

- LIGHTWEIGHT · weight 6 - 8 kg/m<sup>2</sup>
- LOW THICKNESS · average of 4 - 6 mm
- SOLIDITY · as much as stratified products
- PROTECTION · waterproof and insulating
- DURABILITY · not affected neither by the erosion fo elements nor by ultraviolet rays
- UNALTERABILITY · low contraction and minimum expansion
- ADAPTABILITY · easy to fix in any surface
- CONVENIENCE · do not need maintenance or cleaning
- MULTIFUNCTIONAL · could be used as cement shuttering
- PRACTICAL · easy and quick installation, do not require permission for construction
- FREESTANDING · do not need structures
- PERFECTION · visually perfect appearance
- NATURAL · Produced with natural lands. **Varying shade and colors**
- VERSATILE · For exterior and interior

Aunque encontraríamos cientos de adjetivos para definir nuestros productos, resumimos los más destacados:

- LIGEROS · Un peso aproximado de 6 - 8 kg/m<sup>2</sup>
- FINOS · Grosor medio de 4 - 6 mm
- SÓLIDOS · Tanto como los estratificados
- PROTECTORES · Impermeables y aislantes
- PERDURABLES · No les afecta la erosión de los elementos ni los rayos ultravioleta
- INALTERABLES · Baja contracción y mínima dilatación
- ADAPTABLES · Se fijan sobre cualquier superficie
- CÓMODOS · No requieren mantenimiento o limpieza
- MULTIFUNCIONALES · Sirven como encofrado de hormigón
- PRÁCTICOS · Se instalan fácil y rápidamente, sin permiso de obras
- AUTÓNOMOS · No se precisan estructuras
- PERFECTOS · Su apariencia es visualmente perfecta
- NATURALES · Producidos con tierras naturales. **Tonalidades cromáticas variables**
- VERSÁTIL · Para exteriores e interiores



WATERPROOF  
IMPERMEABLE



DRY HEAT RESISTANCE  
RESISTENTE AL CALOR SECO



SCRATCH AND ABRASION  
RESISTANCE  
RESISTENTE A LAS  
RALLADURAS Y A LA ABRASIÓN



RESISTANT AGAINST UV RAYS  
RESISTENTE A LOS RAYOS UV



HEAT AND COLD RESISTANCE  
RESISTENTE AL FRÍO Y AL  
CALOR



EASY TO CLEAN  
FÁCIL DE LIMPIAR



NATURAL COLORS  
COLORES NATURALES



HIGH IMPACT RESISTANCE  
RESISTENTE A LOS IMPACTOS



RESISTANT AGAINST  
CHEMICALS  
RESISTENTE CONTRA LOS  
AGENTES QUÍMICOS



POLYESTER REINFORCED WITH FIBERGLASS · POLIESTER REFORZADO CON FIBRA DE VIDRIO (PRFV)

Mechanical Characteristics · Características Mecánicas

Control Method · Método de control

Unit · Unidad

GRP

Weight · Peso		Kg/m <sup>2</sup>	6
Breaking strength · Resistència a la Rotura	DIN EN ISO 527-1	Mpa	58
Breaking length · Alargamiento de Rotura	DIN EN ISO 527-1	%	1,5 a 3
Modulus of elasticity · Módulo de Elásticidad	DIN EN ISO 527-1	N/mm	1,20 a 4,50 Gpa
3,5% elongation strength · Resistència 3,5% de Elongación	DIN EN ISO 178	%	2 a 5%
Impact resistance without breakage · Resistència al impacto sin rotura	ISO 179-2	J/m <sup>2</sup>	30854
Barcol hardness · Dureza Barcol	UNE 53270	°C	36 a 44°
Bending Strength · Resistència a la Flexión	DIN EN ISO 178	Mpa	26,30
Modulus of bending · Módulo de Flexión	DIN EN ISO 178	Mpa	1320
Tensile Strength · Resistència a la Tracción		Kg/mm <sup>2</sup>	15 a 70

Thermal Characteristics · Características Térmicas

Control Method · Método de control

Unit · Unidad

GRP

Thermal insulation coefficient · Coeficiente Aislamiento Térmico		K	K-5 a K-6
Caloric conduction · Conductividad calorífica		°C · 1cm · 1 m <sup>2</sup> · 1h	0,1 a 0,2
Heat conduction · Conductividad térmica	UNE 53037-76	Kcal · mH°C	0,2 a 0,3
Thermal expansion · Dilatación térmica	ASTM E-E831	°C	240-10 °C
Frost Resistance · Resistència a la Helicidad	UNE 67028	°C	25 cycles. No defects were detected in the tested items · 25 ciclos de -15 °C a + 15 °C No se han observado ningún defecto.

Other Properties · Otras Propiedades

Control Method · Método de control

Unit · Unidad

GRP

Reaction to fire · Reacción al fuego	UNE EN 13501-1:2002	Opción A	Euroclase Bs3d0
Water absorption · Absorción al agua	DIN EN ISO 62-3	Opción B	Euroclase Ds3d0
Range of temperature application · Rango Aplicación de temperatura	Clasificación	%	0,967%
Dimensional Changes · Variaciones Dimensionales	Exposed to + 60 °C in oven and to -20 °C in refrigerator · Exposición de + 60 °C en estufa a -20 °C en frigorífico	°C	- 65 +180
			No significant dimensional changes were detected in any of the tested items · No se han observado variaciones dimensionales significativas en ninguna pieza ensayada

Standard version. Approximate information | Versión estándar. Información aproximada





Tel. 02 8038 2000 Fax. 02 9417 6169 Email. [sales@allplastics.com.au](mailto:sales@allplastics.com.au)  
Address. Unit 20/380 Eastern Valley Way, Chatswood, NSW 2067 AUSTRALIA. [www.allplastics.com.au](http://www.allplastics.com.au)