

## **8.2. Cleaning of PC surfaces**

### **Cleaning and spot removal:**

Special cleaning material is not necessary. To avoid surface damage no aggressive cleaning material should be used.

### **Standard cleaning:**

Use a lukewarm mixture of soap and water or a mild household detergent. Dirt can be removed with a cloth or sponge. All surfaces to be washed with cold water and to be dried with a soft cloth to avoid water marks.

**Persistent marks** can be cleaned with the following solvents:

Mentholated Spirits or Prepsol.

### **Do not use alkaline cleaners!**

Do not handle the surface with razor blades or any other sharp-edged instruments.

## **8.3. Cleaning of PMMA surfaces**

### **Cleaning and spot removal:**

We recommend a special "Plastic Intensive Cleaner" from Burnus GmbH / Darmstadt. This cleaning material preserves the facing and does not leave any marks behind.

### **For standard cleaning**

we recommend a cleaning material of the same company as above called "VuPlex® Plastic Cleaning". This cleaning material is without toxic vapours and does not leave any marks on the plastic surface behind. **Also usable** are window cleaning materials. Please do not use any aggressive detergents. Do try some different brands like Ajax®.

## 2 Illumination with AIR-board UV PC (clear surface)

### 2.1 White neutral (5000 Kelvin)



Abstand LED zu LED 50 mm Abstand LED zu AIR-board 25 mm  
distance LED to LED 50 mm, dist. LED to AIR-board 25 mm



Abstand LED zu LED 50 mm Abstand LED zu AIR-board 100 mm  
distance LED to LED 50 mm, dist. LED to AIR-board 100 mm



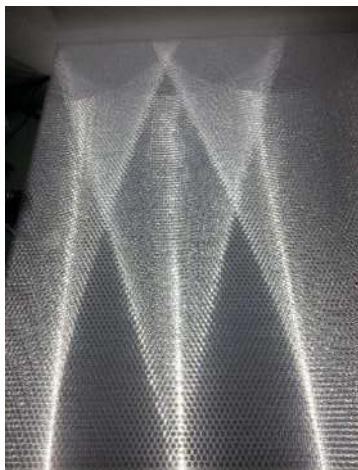
Abstand LED zu LED 50 mm Abstand LED zu AIR-board 200 mm  
distance LED to LED 50 mm, dist. LED to AIR-board 200 mm



Abstand LED zu LED 200 mm Abstand LED zu AIR-board 25 mm  
distance LED to LED 200 mm, dist. LED to AIR-board 25 mm



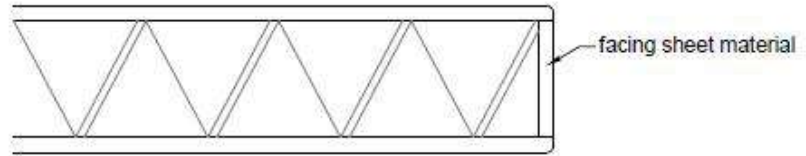
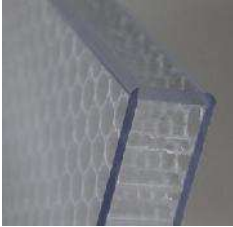
Abstand LED zu LED 200 mm Abstand LED zu AIR-board 100 mm  
distance LED to LED 200 mm, dist. LED to AIR-board 100



Abstand LED zu LED 200 mm Abstand LED zu AIR-board 200 mm  
Distance LED to LED 200 mm, dist. LED to AIR-board 200 mm

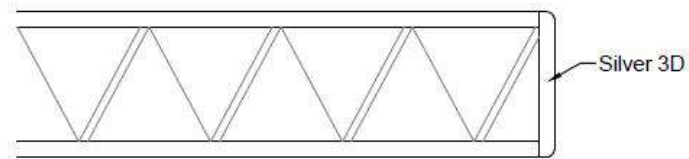
# Types of edge sealing

## INT-1



Edge banding in the best optical quality for indoor applications. A strip of facing sheet material is bonded between the inner surface of the facing sheets. Colours: transparent, satin or solid

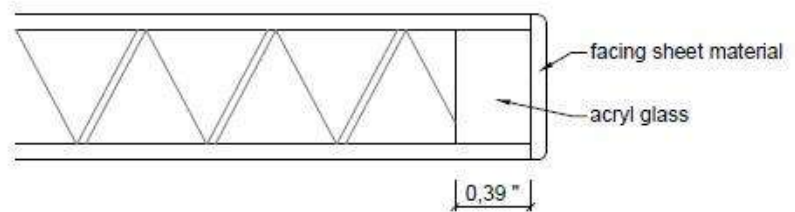
## INT-2



Edge banding for indoor applications in standard Silver 3D or non-transparent edging material. Colours: satin or solid.

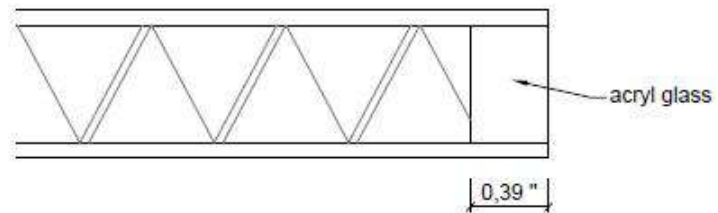
# Types of edge sealing

## EXT-1



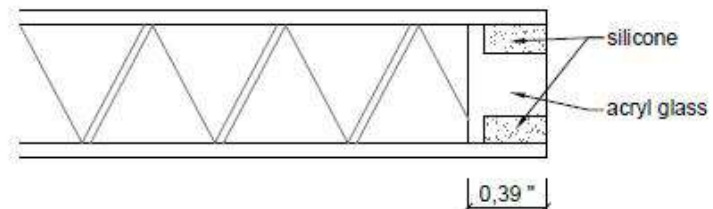
Edge banding in the best optical quality for indoor and outdoor applications. A 10 mm strip of acrylic material is bonded between the inner surfaces of the facing sheets to which an overlapping strip of facing sheet material is applied.

## EXT-2



Edge banding in the best optical quality for indoor and outdoor applications. A 10 mm strip of acrylic material is bonded between the inner surfaces of the facing sheets. Choice of colour to customer's requirement.

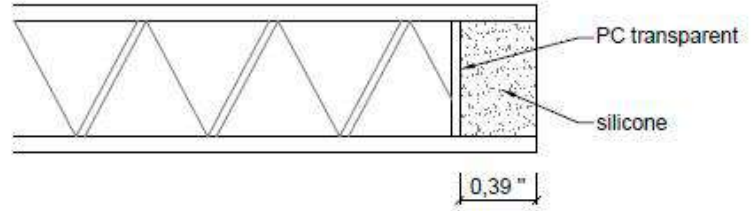
## EXT-3



Waterproof edge sealing for external applications consisting of a combination of a grooved acrylic glass strip and a silicone filling; particularly applicable for thicker panels.

# Types of edge sealing

EXT-4



Waterproof transparent silicone edge sealing for external applications.

# Mounting instructions

## AIR-board<sup>®</sup> acoustic

### Delivery Control

Any visible damage should be mentioned clearly on the shipping documents. Any damage should be instantly reported with (digital) pictures to Design Composite. Opening the packaging and/or manually unloading the sheets automatically means acceptancy of delivery.

The pallets are not stackable. If pallets are stocked, do not accept the goods.

### Unloading and sorting

Shipping, Handling and Unloading: Deliver finished products to the project site in the manufacturer's original, unopened packing. Do not unpack or handle them until the project environmental requirements have been met and the products are ready to be installed.

Storage and Protection: Store all finished panels and associated trim pieces in a clear, dry, fully-enclosed storage facility. Protect panels from damage that may be caused by exposure to water, chemicals, direct sunlight or infestation.

Acceptance at Site: Ensure all project environmental requirements have been met prior to unpacking or installing finished panels or associated trim products. Full or partial installation constitutes complete product acceptance.

### Maintenance

The panels are covered with a protective transparent foil on both sides which should only be removed shortly before or straight after installation. Remove dust from surfaces by vacuuming using only a soft brush. Do not scratch sheet surfaces with sharp metal or plastic vacuum cleaner extensions. Remove general surface dirt with a clean, soft cloth dampened with a diluted, mild, non abrasive cleaning agent and warm water or a solution of 50% isopropanol and water. Wipe again with clear, soft cloth dampened only with warm water. Finally, dry surface completely with dampened chamois leather.

### Installation

Site Verification Conditions: Examine installation area for compliance with all manufacturer's project environmental requirements and ensure uninstalled products have been stored, handled and acclimatized properly (24h) prior to commencing installation. Inspect all substrates for completion and quality of work to ensure that surfaces are level, plumb, clean, dry and completely cured from water or solvent evaporation. Do not commence installation if the structural capacity of the substrate is questionable or inadequate. The advised average room temperature during and after installation is 18° C. The humidity of air should not exceed 65%.

### Adjusting:

Adjust panels so that surfaces are aligned, flush and level or plumb and gaps in between units are of consistent width and straight. Check that manufacturer's expansion/contraction requirements were maintained during installation. As required, adjust the mounting hardware or suspension system to allow for the appropriate amount of product expansion/contraction.



### Contact us

Tel. (02) 8038 2000 Fax. (02) 9417 6169

Address. Unit 20/380 Eastern Valley Way, Chatswood, NSW 2067 AUSTRALIA. [www.allplastics.com.au](http://www.allplastics.com.au)

# Mounting instructions

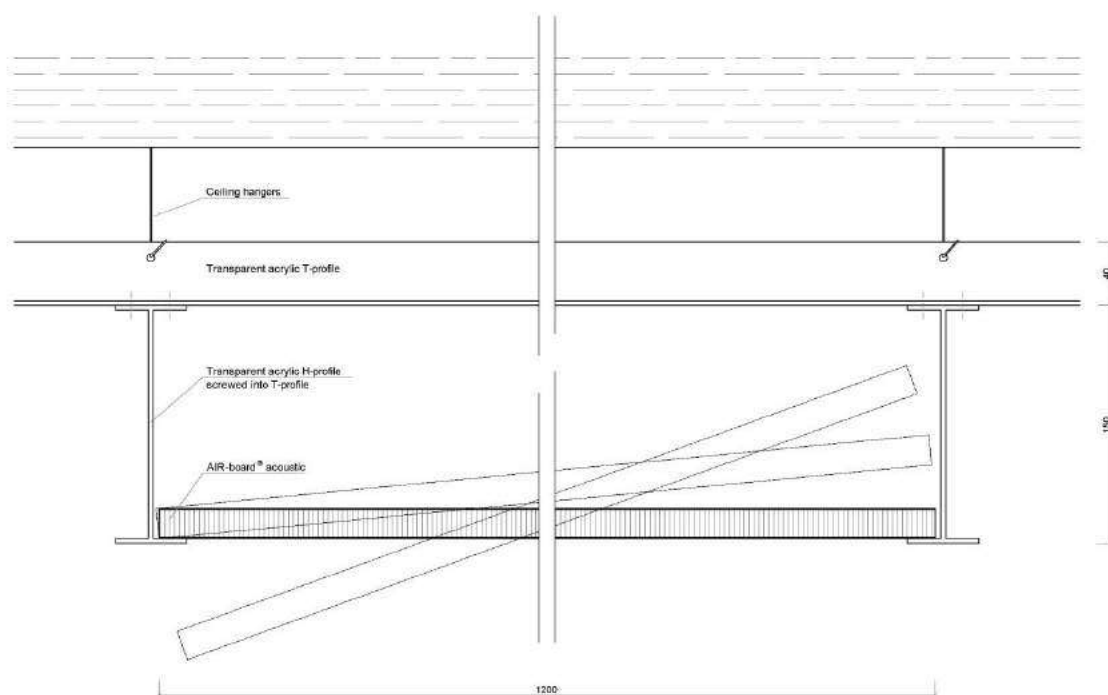
## AIR-board<sup>®</sup> acoustic

### EXAMPLES

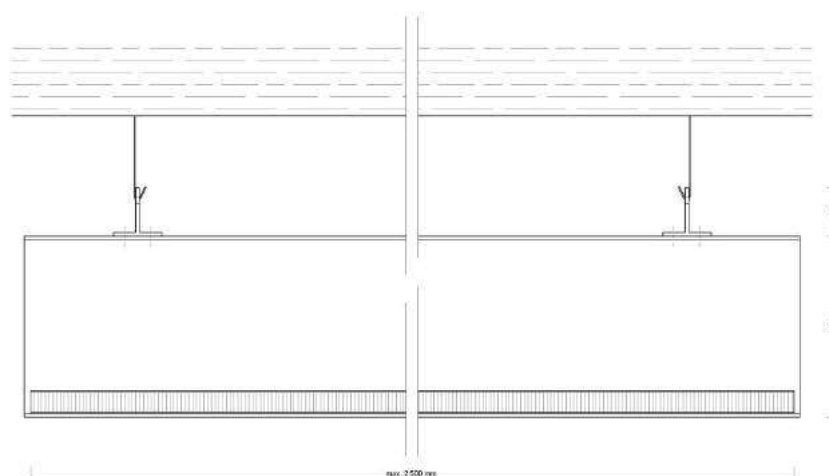
#### Ceilings:

- Suspended ceiling with removable AIR-board<sup>®</sup> acoustic panels on transparent acrylic bars:

Front view:



Section:

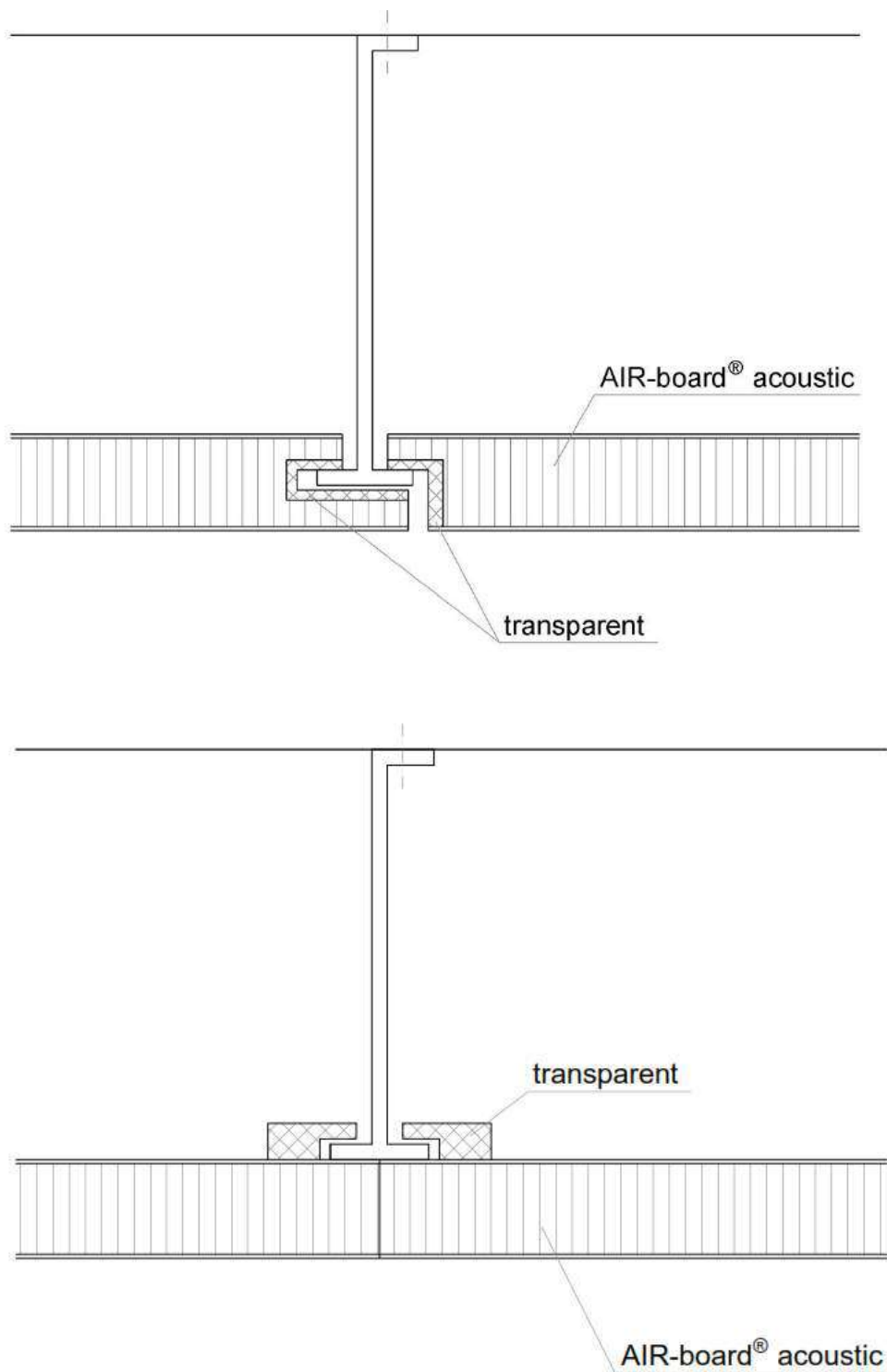




# Mounting instructions

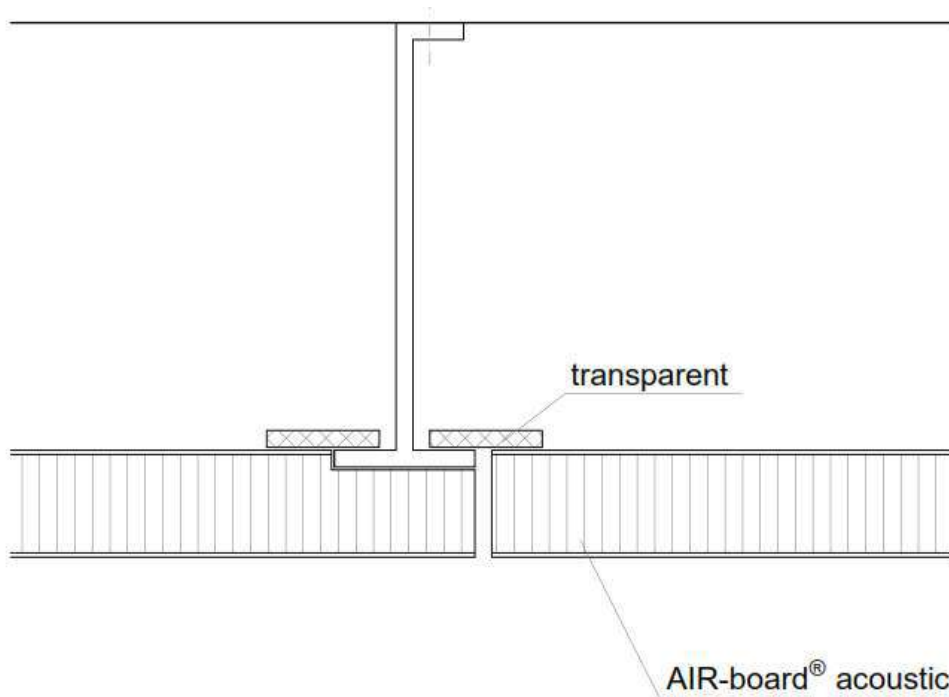
## AIR-board<sup>®</sup> acoustic

Ceiling mounting with T-profiles:



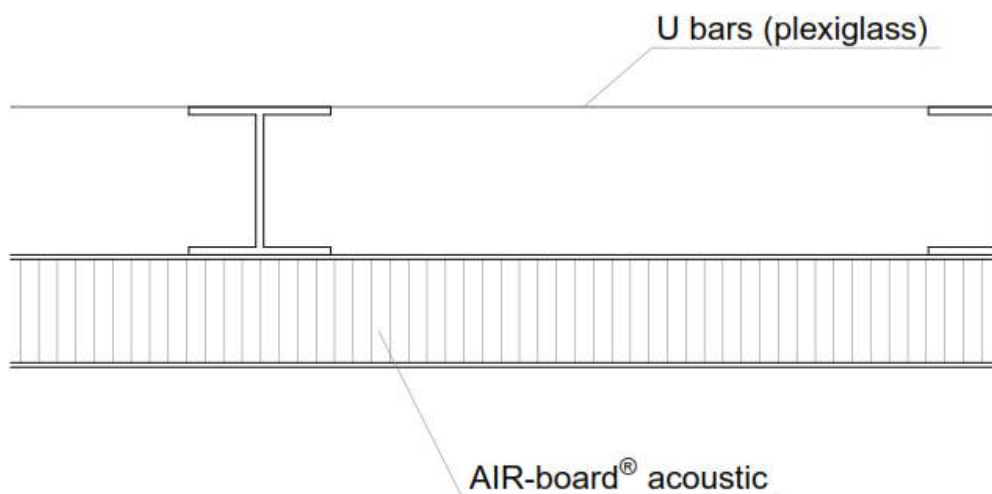
# Mounting instructions

## AIR-board<sup>®</sup> acoustic



### Walls:

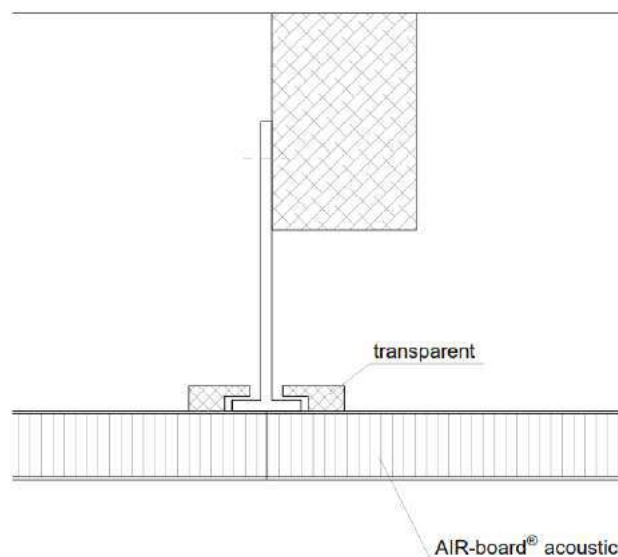
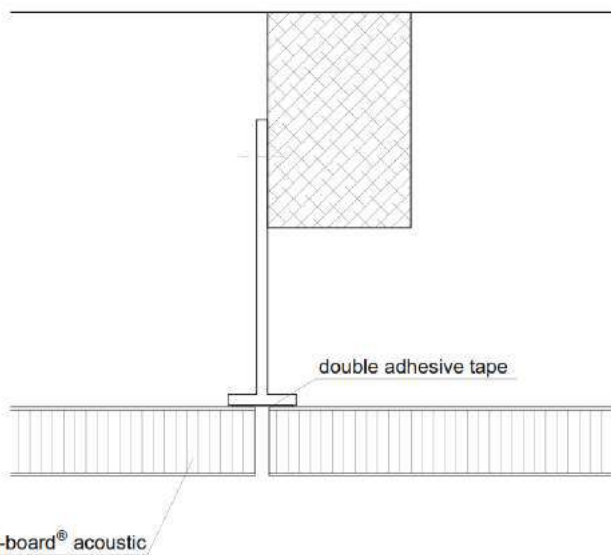
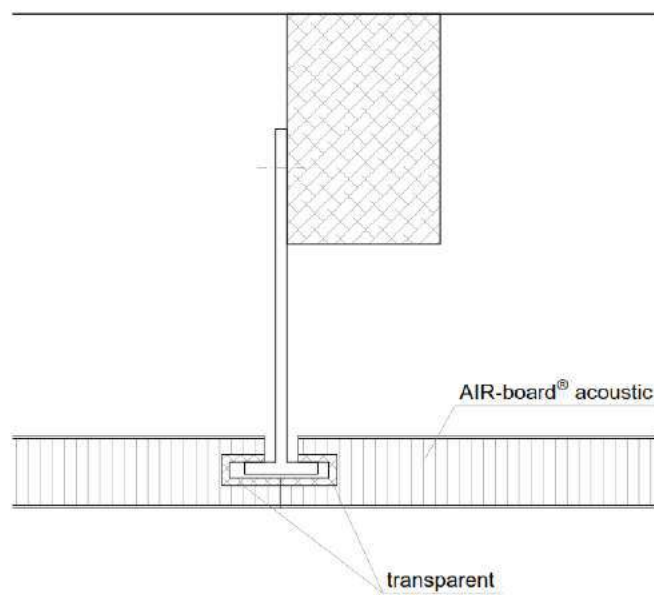
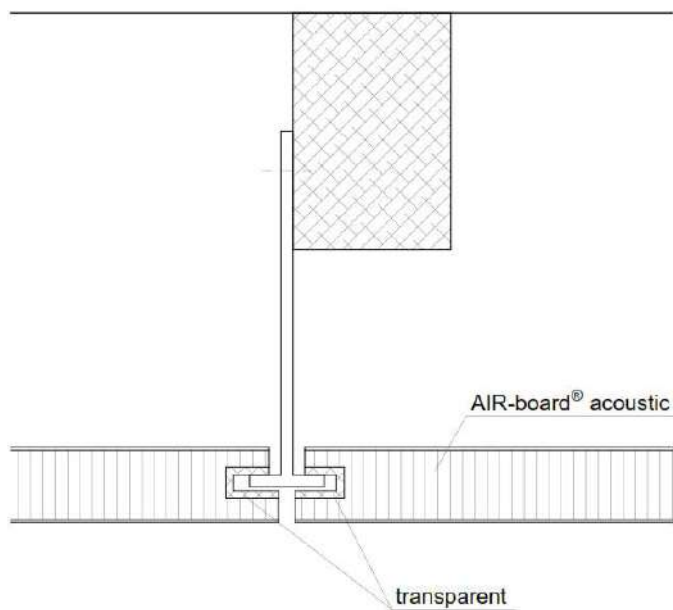
- Wall mounting with transparent acrylic bars and transparent double sided adhesive tape



# Mounting instructions

## AIR-board® acoustic

- Wall mounting with T-bars:

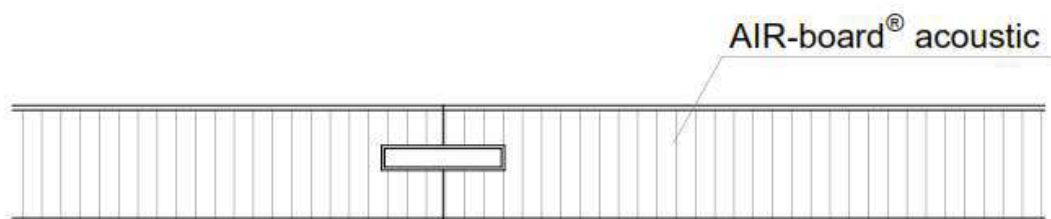


# Mounting instructions

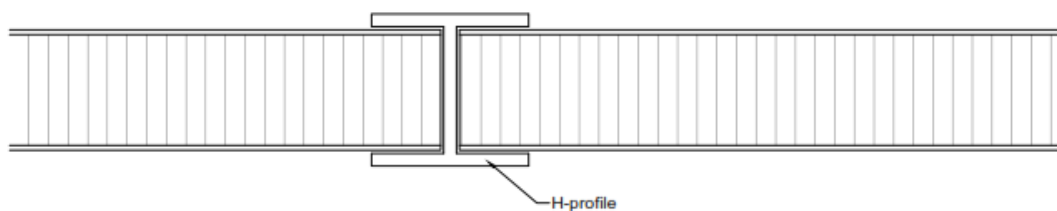
## AIR-board<sup>®</sup> acoustic

-180° Panel connection:

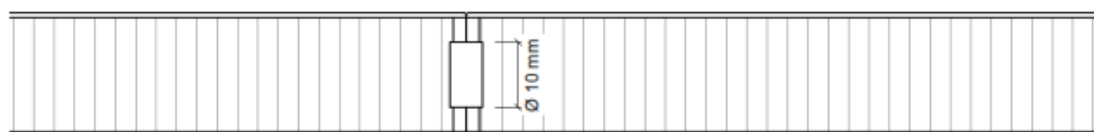
- with Plexiglass tongue:



- with H-profile:



- with translucent edge bandings + transparent studs:



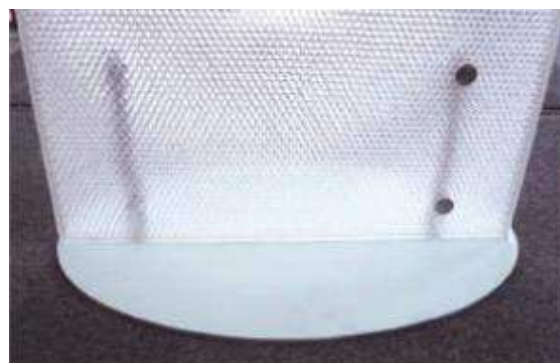
The installation contractor shall have a minimum of 5 years successful experience in installing wood ceiling and wall systems in similar applications using similar techniques of suspension systems.

The manufacturer or distributor can not be held responsible for damage occurred during storage or installation.

# Mounting instructions

## AIR-board<sup>®</sup> acoustic

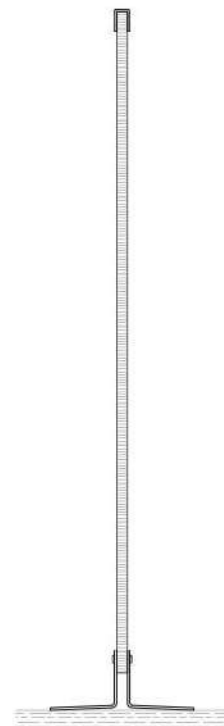
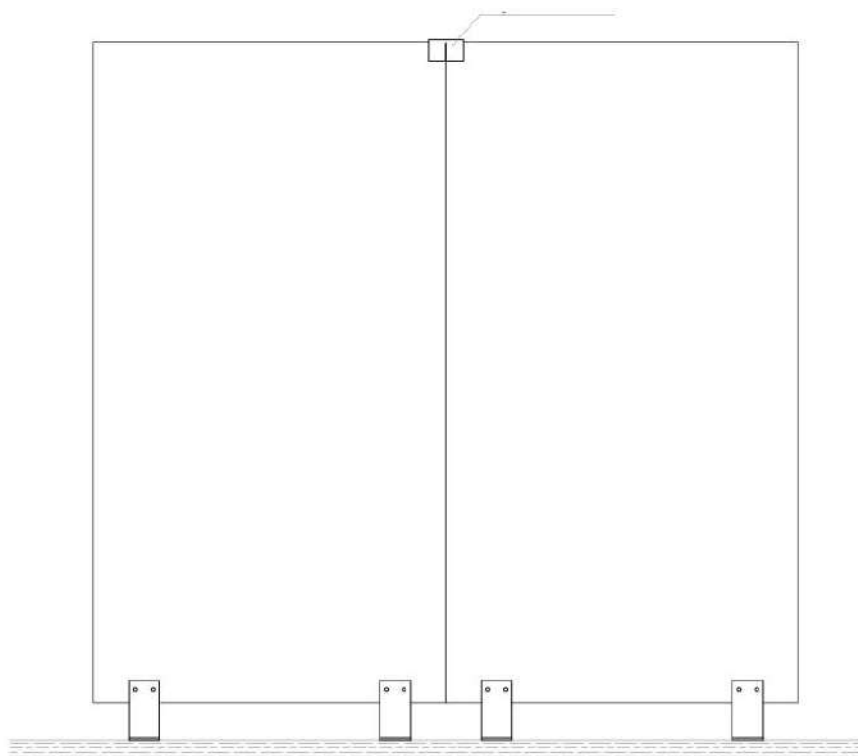
Further mounting examples:



# Mounting instructions

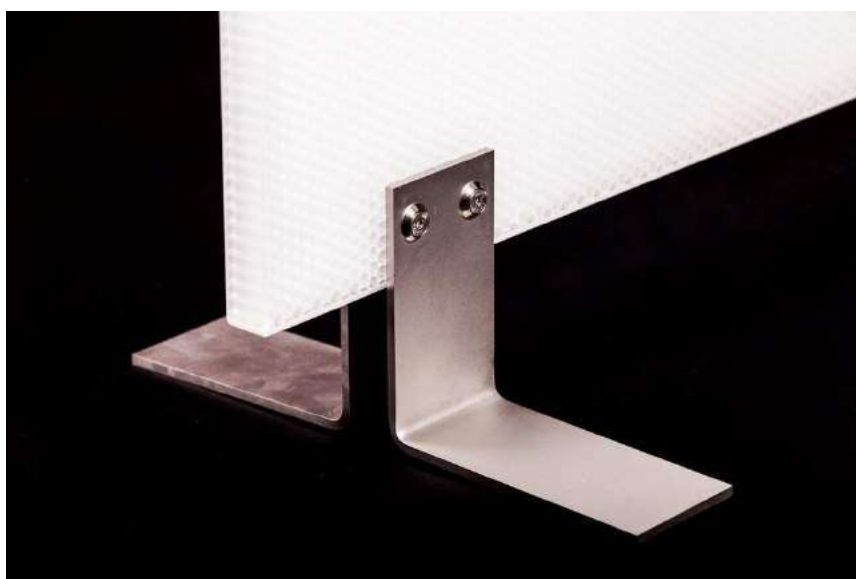
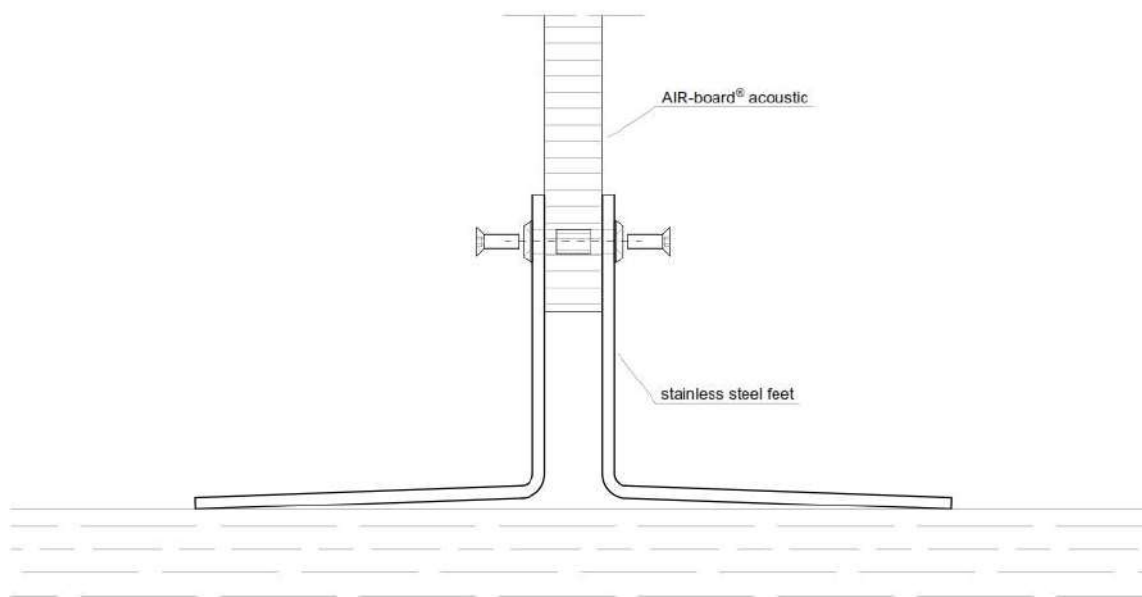
## AIR-board<sup>®</sup> acoustic

Partition wall: junction by a horizontal acrylic U-fitting:



# Mounting instructions

## AIR-board<sup>®</sup> acoustic

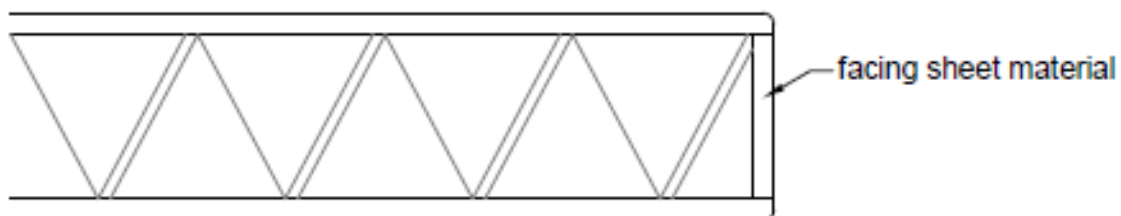
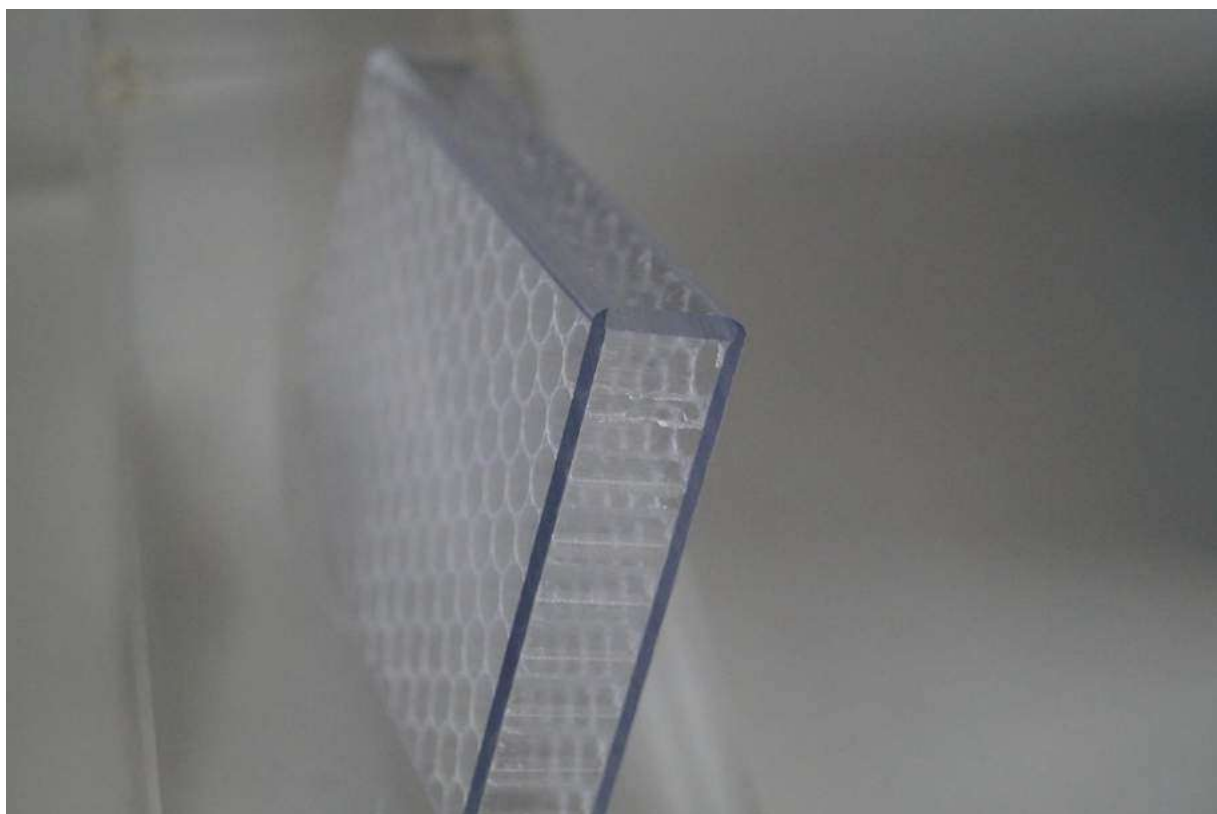


# Mounting instructions

## AIR-board<sup>®</sup> acoustic

### Edge banding:

#### INT-1

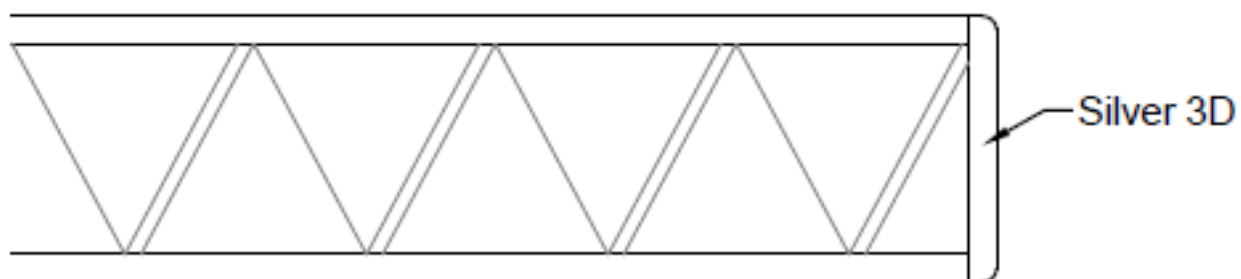




# Mounting instructions

## AIR-board<sup>®</sup> acoustic

INT-2



# Mounting instructions

## AIR-board<sup>®</sup> acoustic

Stainless steel fittings:

